

SEVERN
TREESCAPES –
THE BENEFITS OF
TREES TO
FARMING

THIS WEBINAR
WILL BEGIN
SHORTLY



CLA

WEBINAR

ADVICE.
INSPIRATION.
SUPPORT.

Webinar Agenda:

Welcome – Roger Mortlock

Severn Treescapes Project – Will Masefield

Inspiring Woodland Creation – Emma Clitherow

Making informed decisions – Graham Clark

Integrating trees to improve productivity – Ben Raskin

Q&A

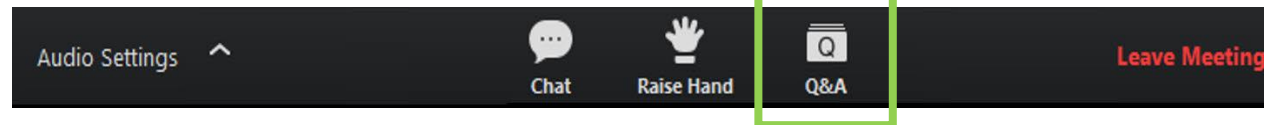


have your say #CLAWebinar



WEBINAR

ADVICE.
INSPIRATION.
SUPPORT.



 have your say #CLAWebinar




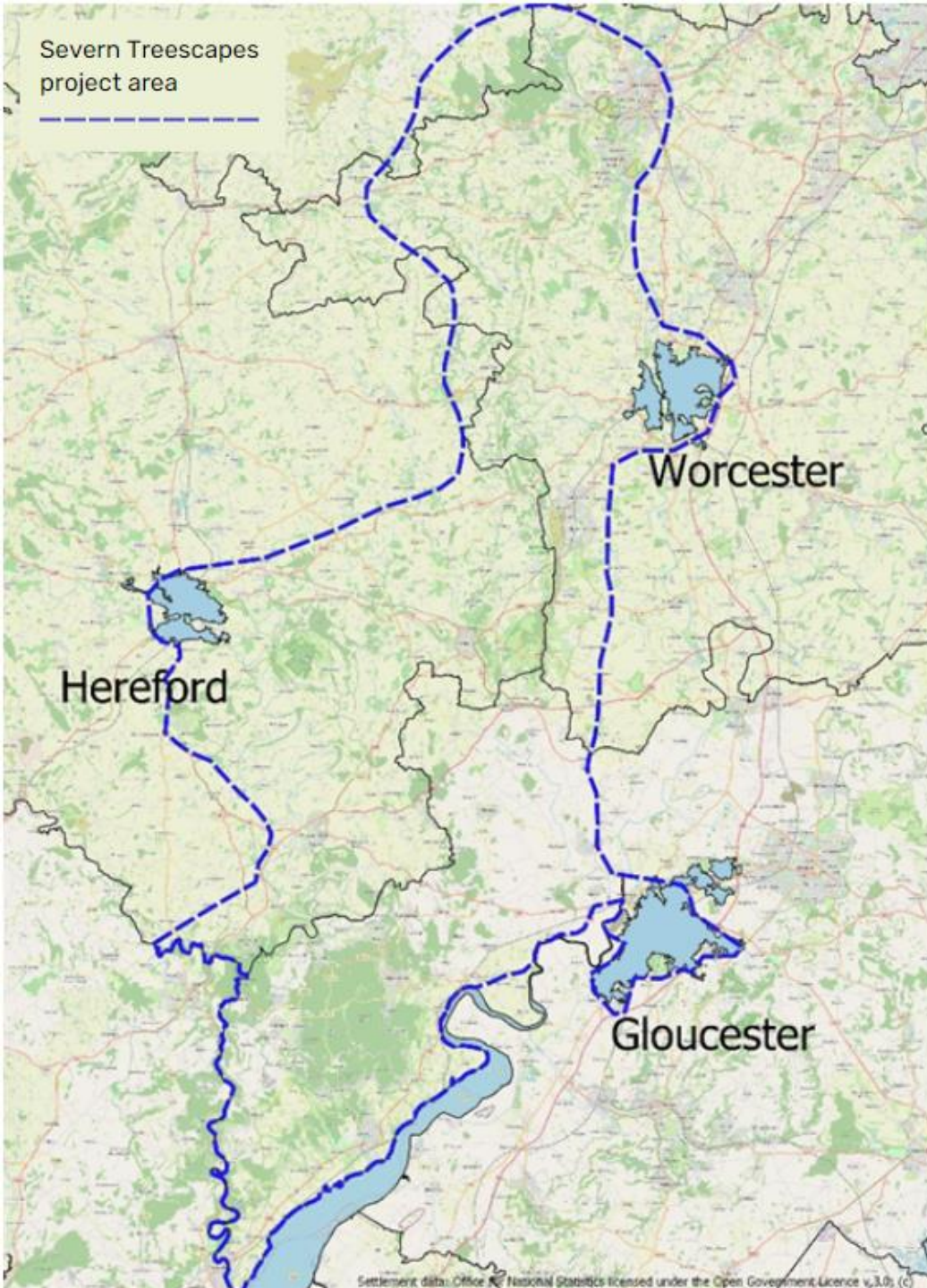
WEBINAR



Severn Treescapes

Wye to Wyre: connecting nature and people

- ***Expand, connect, protect and improve the*** woodland network, contributing to nature recovery and ecosystem services
 - Show that woodland creation and connectivity ***go hand in hand with delivering productive agricultural land***, supporting innovative approaches to forestry and the green economy
 - ***Enhance connections between people, trees and nature*** – *Seed to Sapling programme and Queen's Green Canopy*
- 



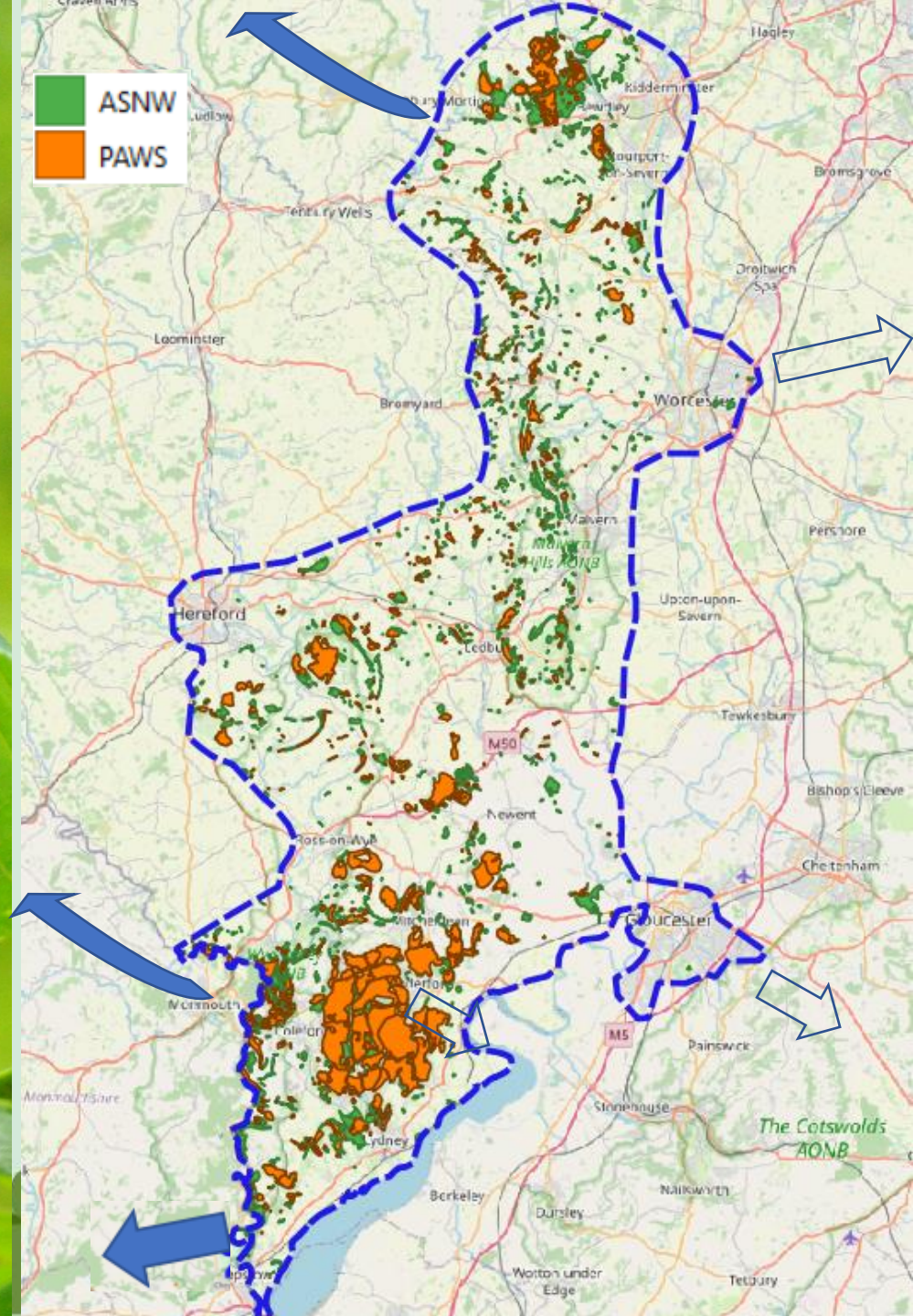
Why?



Opportunity to link 4
important landscapes

Existing ancient woodland
core

Potential to connect them
to create a climate-
resilient landscape

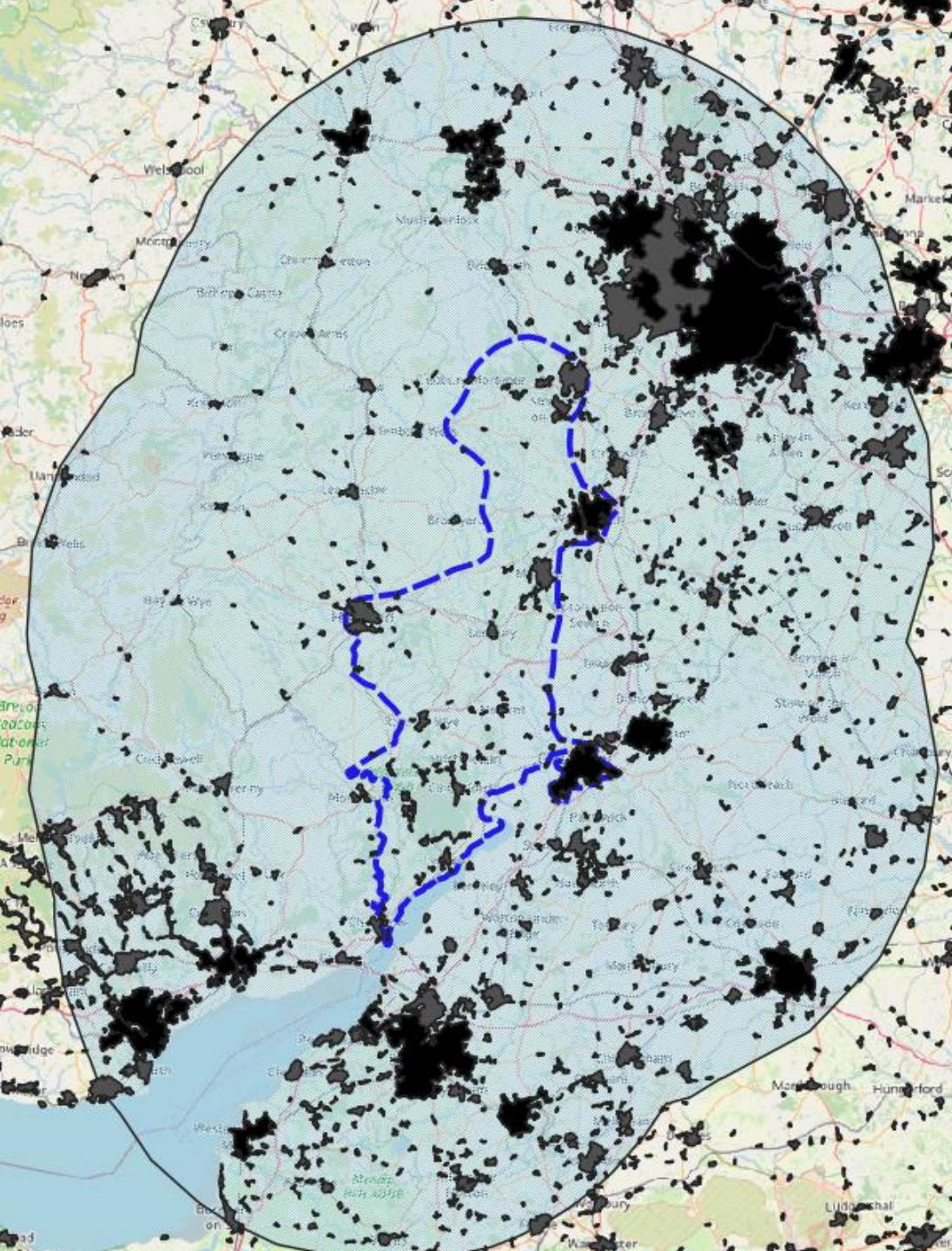


Why?

Within 30 miles of 8 million people

Strong community element to the project

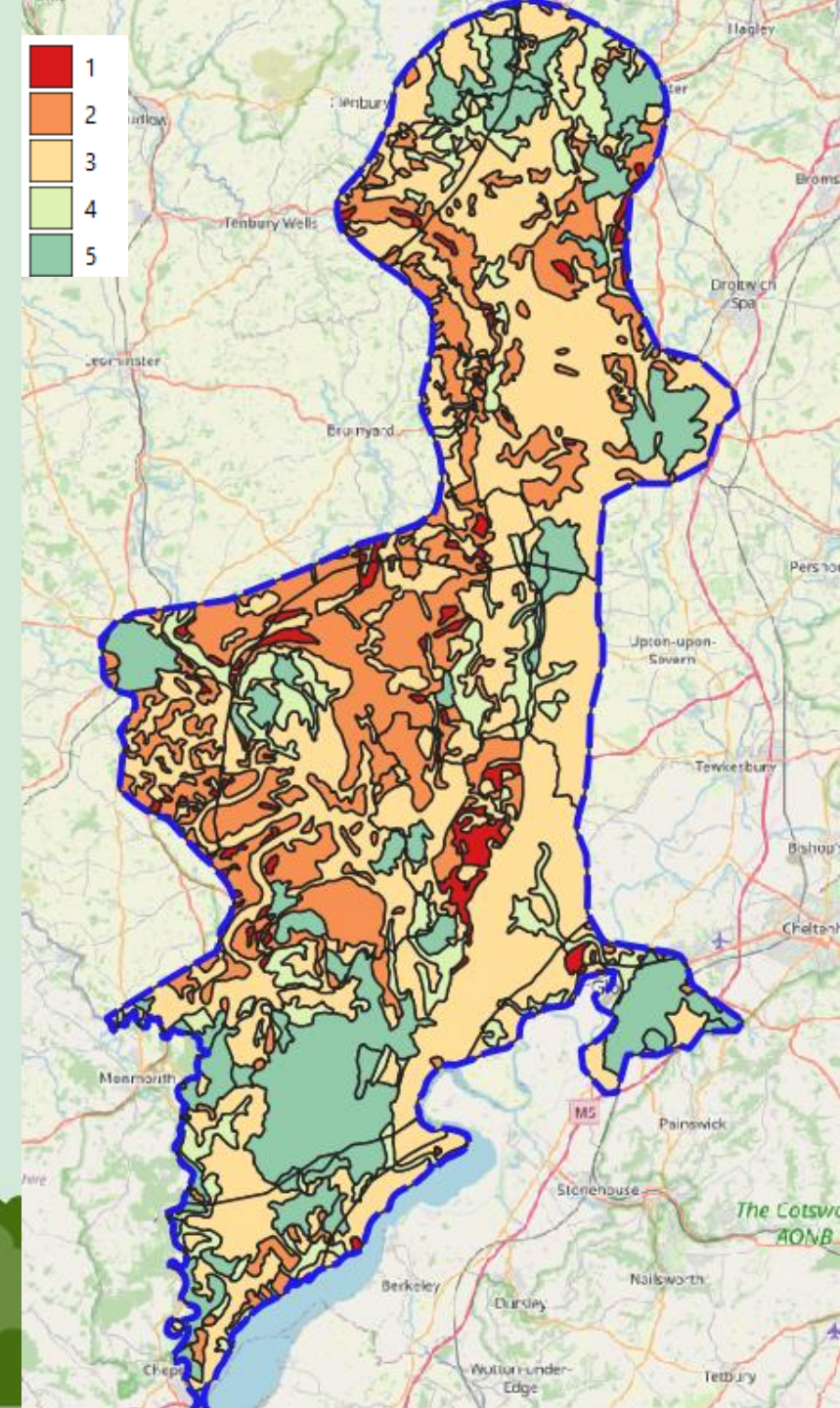
Opportunities to link green infrastructure right through into urban areas



Why?

A productive landscape

- Long term vision is of a landscape that combines connected habitats with productive agriculture
- Food security
- Many different ways to integrate trees into the landscape that maintain and benefit agricultural productivity and animal welfare



Why?

Carbon capture

Reduced pollution

Soil stabilisation

Improved air-quality

Improved Water Quality

Recreation

Reduced soil and nutrient loss

Timber and Wood-fuel

Keeping rivers cool

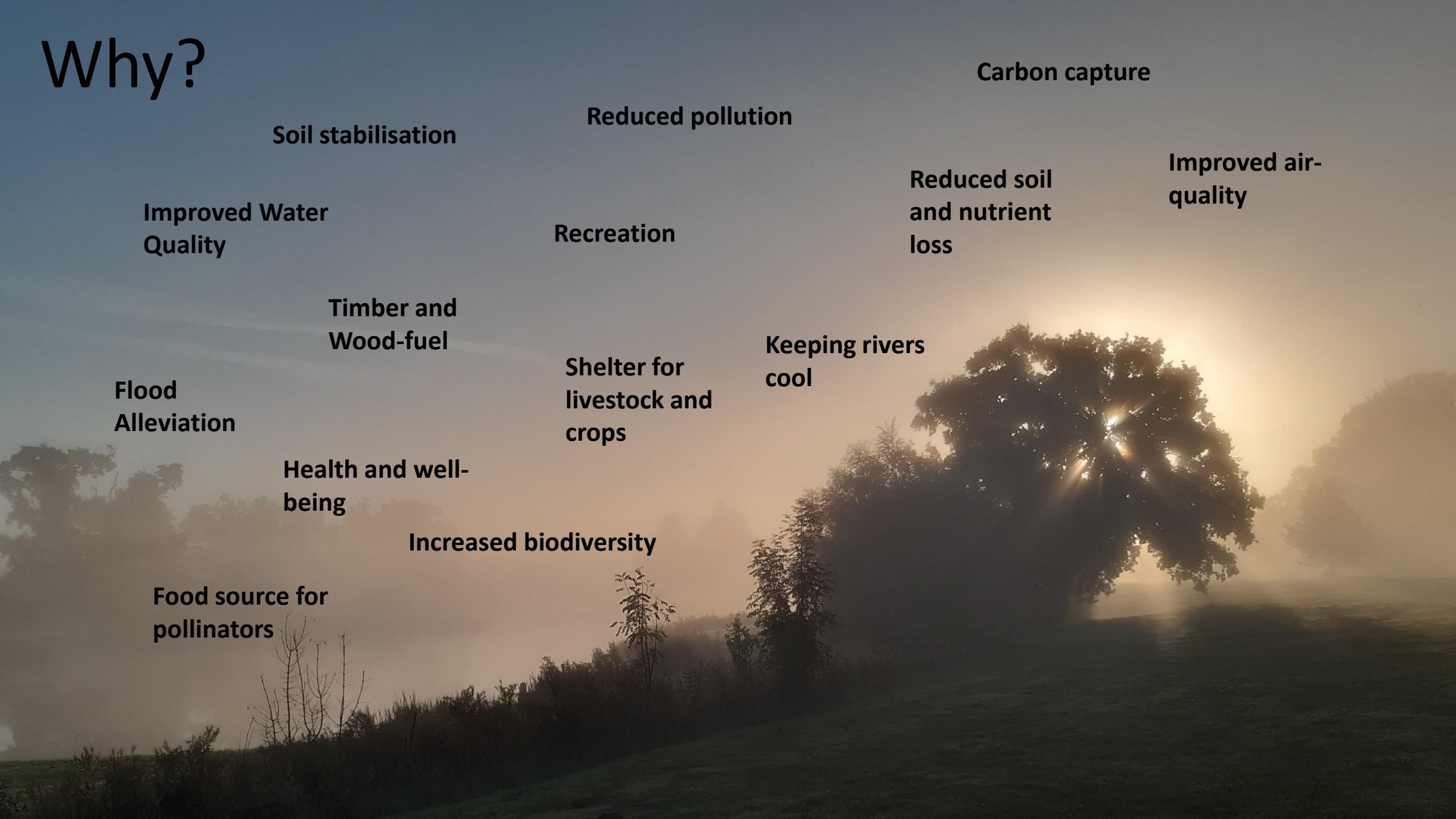
Flood Alleviation

Shelter for livestock and crops

Health and well-being

Increased biodiversity

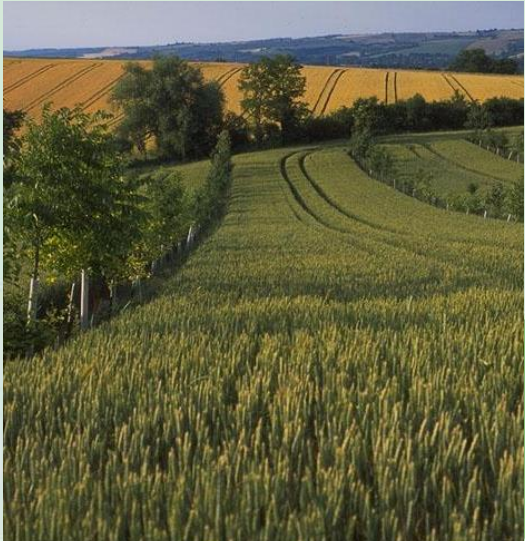
Food source for pollinators

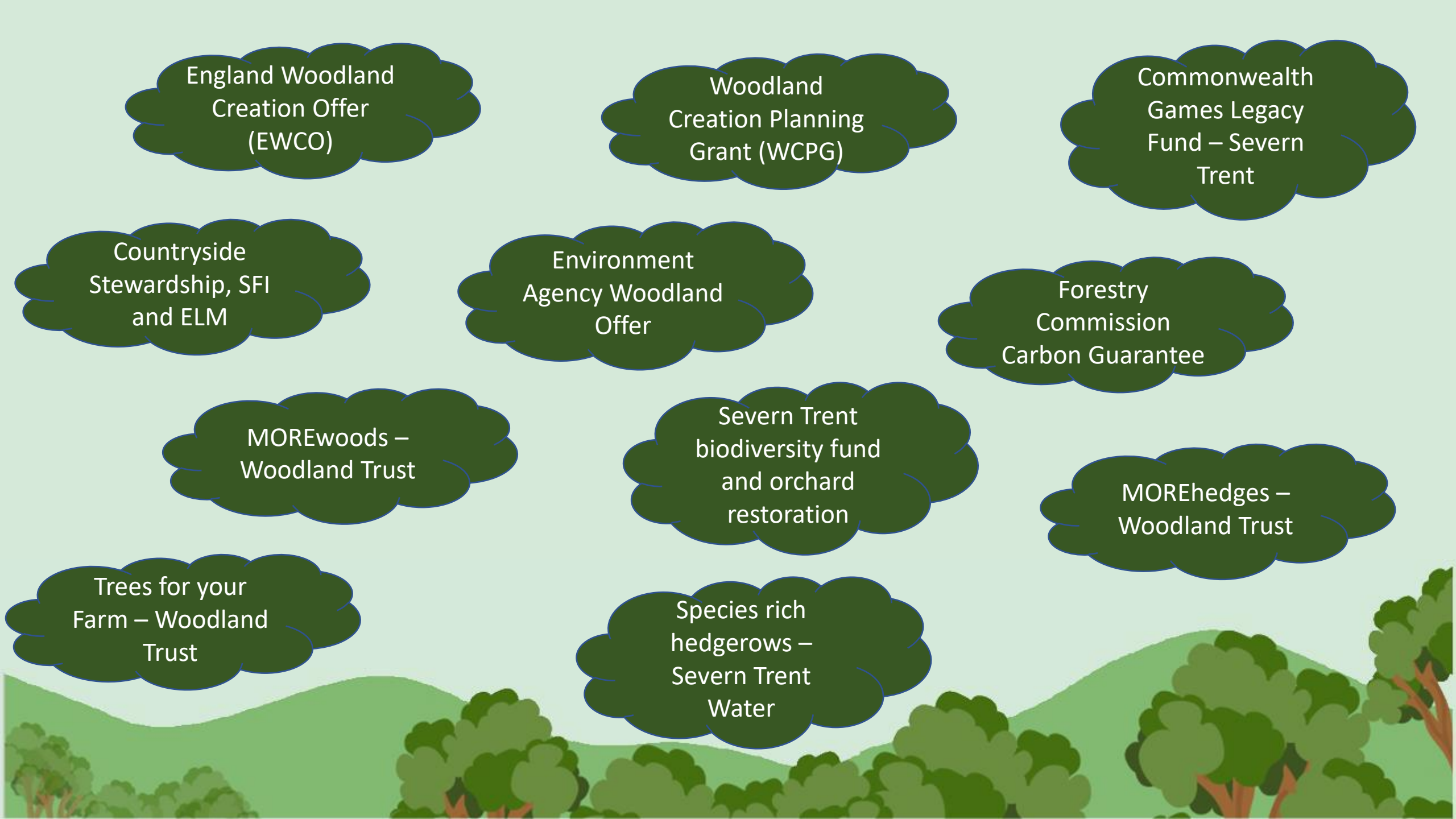


How?

Working with farmers and landowners

- Finding the right opportunities – team of advisors for one-to-one visits
- Helping landowners to access funding and supporting the process
- Providing learning resources and site visits to show trees in action (eg agroforestry)
- Demonstration site visits and informative events





England Woodland
Creation Offer
(EWCO)

Woodland
Creation Planning
Grant (WCPG)

Commonwealth
Games Legacy
Fund – Severn
Trent

Countryside
Stewardship, SFI
and ELM

Environment
Agency Woodland
Offer

Forestry
Commission
Carbon Guarantee

MOREwoods –
Woodland Trust

Severn Trent
biodiversity fund
and orchard
restoration

MOREhedges –
Woodland Trust

Trees for your
Farm – Woodland
Trust

Species rich
hedgerows –
Severn Trent
Water

Who: the project delivery team

Post	Host
Project Manager – Will Masefield	Gloucestershire WT
Trees and Woodland Advisor Gloucestershire Ann Harris and Charlotte Vincent (job-share)	Gloucestershire WT
Trees and Woodland Advisor Herefordshire Charlotte Bell	Herefordshire WT
Trees and Woodland Advisor Worcestershire Laurence Richards	Worcestershire WT
Community Engagement and Communications Coordinator Megan Finn	Gloucestershire WT

More info at:

www.gloucestershirewildlifetrust.co.uk/severn-treescapes

Will.Masefield@gloucestershirewildlifetrust.co.uk

Charlotte.Vincent@gloucestershirewildlifetrust.co.uk

Ann.Harris@gloucestershirewildlifetrust.co.uk

www.herefordshirewt.org/severn-treescapes

C.Bell@herefordshirewt.co.uk

www.worcswildlifetrust.co.uk/severn-treescapes

Laurence@worcestershirewildlifetrust.org





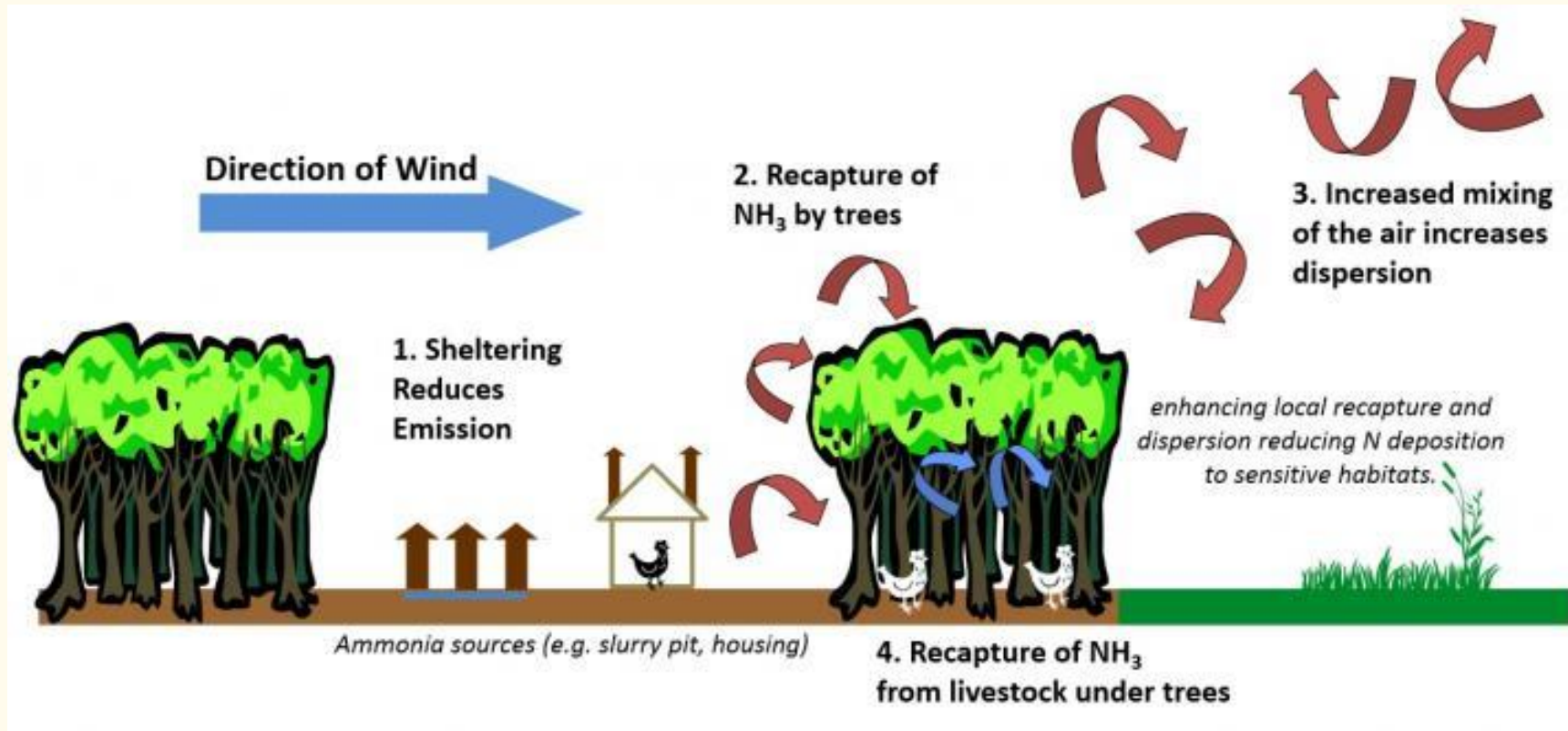
Inspiring Woodland Creation



The holistic benefits of woodland creation

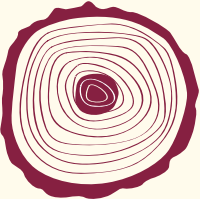


Air Quality – how trees can help



Generate reliable income streams

- Woodland provides new opportunities land use and enables business diversification.



Timber & Woodfuel

Well-managed woodlands can provide viable income through timber and woodfuel.



Carbon offsets

For every tonne of carbon dioxide (CO₂) sequestered created sellable carbon units (if registered with WCC).



Recreation

Woodlands offer new recreation opportunities for land, from glamping to forest schools.

Financial incentives



For more information on available funding, visit:
www.gov.uk/guidance/tree-planting-andwoodland-creation-overview

Designed for
land
managers and
farmers...

Minimum 1ha
planting.

Objectives:

- Wildlife
- Income
- Improve productivity
- Diversify
- Landscaping



**EWCO has the flexibility to
allow you to create woodland
that works for your objectives.**

How EWCO stacks up

Private finance

Timber, carbon, private finance for ecosystem services

Additional contributions

Up to £8,000/ha when contributing to additional benefits

Actual cost support for activities

Contribution towards the actual cost of infrastructure

Annual maintenance payments

£350/ha per year

Basic Payment Scheme compatibility

Continue to claim BPS on eligible land planted under EWCO

Capital costs

Up to £10,200/ha to support tree planting activities

Additional contributions

Offer greater recognition of the public benefits and ecosystem services provided by woodland

Nature recovery – high/medium	Up to £2,800/ha
Water quality	£400/ha
Reduced flood risk	£500/ha
Riparian buffers	£1,600/ha
Close to settlements	£500/ha
Access	£2,200/ha

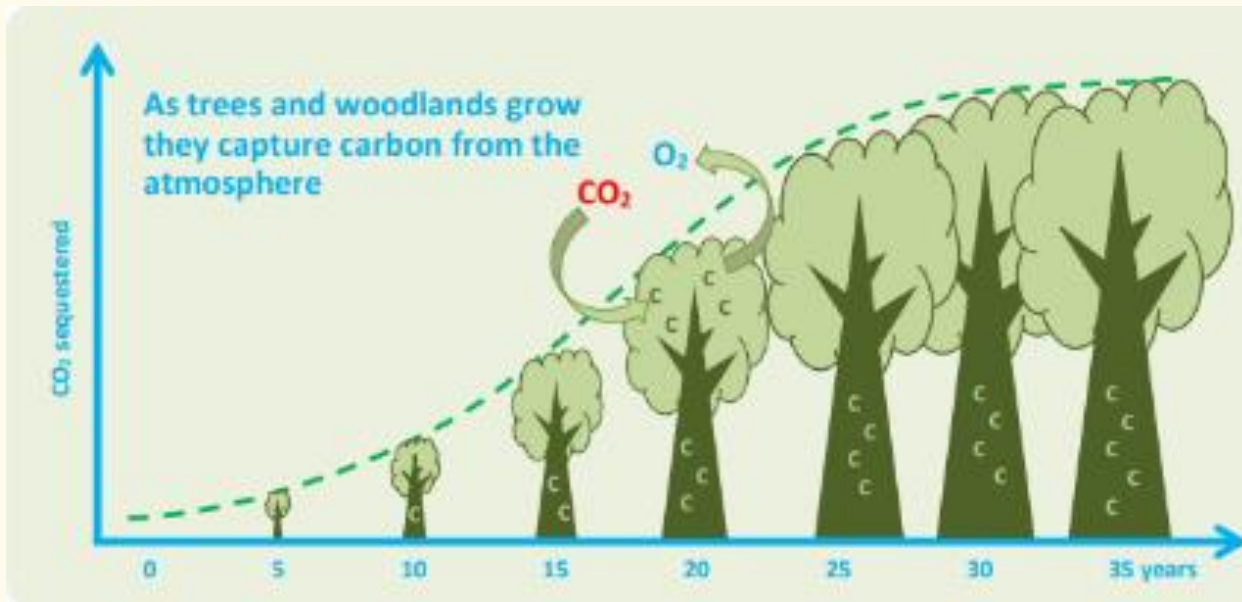
Woodland Carbon Code

WCC is the quality assurance standard for woodland creation



Carbon capture

- Trees absorb CO_2 and store it
- One tonne of CO_2 absorbed is a 'carbon credit'
- Carbon credits can be used internally to offset, or sold on to others



Support to help you grow trees

Help we can offer



Guidance on planning, grants, planting and achieving UKFS standards

We also offer advice on:



Woodland management



Priority landscapes, species and habitats



Tree health



Productive forests



Historic sites



Deer management



Inspiring Woodland Creation

Thank you.



MAKING INFORMED DECISIONS -

KEY ISSUES TO CONSIDER BEFORE PLANTING TREES

GRAHAM CLARK
CLA SENIOR LAND USE POLICY ADVISER



The logo for CLA (Countryside Land Allotment) features the letters 'CLA' in a bold, white, sans-serif font. A yellow swoosh underline is positioned beneath the 'A'. The logo is set against a dark teal rectangular background.

WHAT THIS TALK IS ABOUT



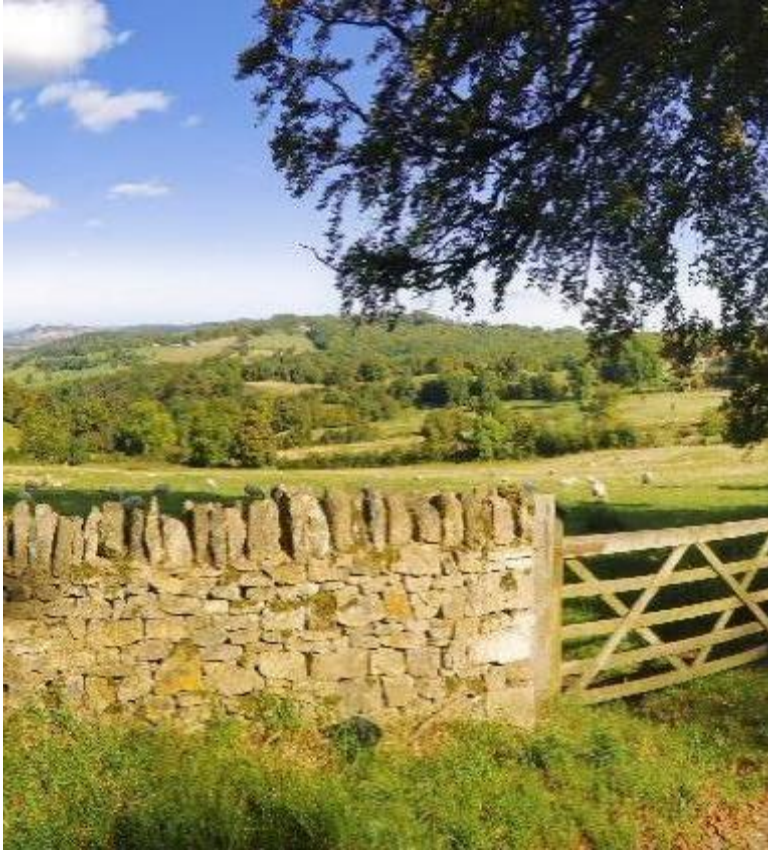
- The importance of making right choices for you & your land
- Govt want to expand tree cover – but every holding unique & trees won't work everywhere
- Trees need to be compatible with existing land use & business objectives
- Good decisions are informed decisions



KEY CONSIDERATIONS

- Having clear objectives
- Irreversibility/permanence
- Changed income profile
- Carbon credits
- The need for advice
- Importance of proper planning
- Grant processes

HAVE CLEAR OBJECTIVES



- Trees perform many roles
- Timber or fuel supply, carbon income, shelter/shade, screening, link existing habitats, enhance landscape, offset farm emissions, buffer water courses, flood management
- What do you want to achieve through tree planting?
- Can have multiple objectives
- Clarifying objectives will help with choices on siting, design, species, density, management

PERMANENCE



TREES ARE FOREVER

- Woodland creation essentially an irreversible decision
- Forestry Act, 1967 – felling licenses and restocking obligations
- UK Forestry Standard
- Not to be undertaken without due consideration
- Govt considering relaxation of permanence for agroforestry

CHANGED INCOME PROFILE



- Woodland creation means loss of annual income from that land
- Capital grants essentially cover planting costs & maintenance payment in early years
- Can look attractive over 10 years
- Makes most sense on marginal areas
- Factor into land use across holding
- Any timber income 40–100 yrs away & thinnings may not cover costs
- Carbon income possible on top

CARBON CREDITS

- ‘Voluntary Carbon Markets’ - potential new revenue stream
- Regular (5 yearly) income - or up-front capitalized sum) - from sale of carbon credits created when new woodland is created (not existing woodland).
- Buyers: businesses needing/wanting to offset emissions or Govt (Woodland Carbon Guarantee scheme)
- Potential opportunity for new woodlands >10ha - but low carbon price and costs of verification under UK Woodland Carbon Code are prohibitive for small projects
- Also, think carefully before selling carbon – you may need credits yourself to offset own emissions in future



THE IMPORTANCE OF ADVICE

- There's a lot to think about – what, where, why, how much, what if, etc
- Take advice from various sources available – Severn Treescapes, Forestry Commission, Woodland Trust - before deciding what's for you
- Severn Treescapes can discuss the funding sources & advise which may suit your objectives
- Initial advice on options and opportunities can help – but it is distinct from paying an adviser to work up a detailed woodland creation plan to accompany a grant application
- Match species to site & factor in climate change (use Ecological Site Classification tool)
- Agree what the adviser will & won't do & the expected output



THE IMPORTANCE OF PROPER PLANNING

- Woodland creation will impact on existing habitats, landscape & historic environment
- Impacts have to be assessed for significance – consult statutory bodies and neighbours
- Design should reflect stakeholder concerns – ‘design out’ objection
- Publicly funded woodland creation has to be UK Forestry Standard compliant and consultation written into UKFS
- FC Woodland Creation Planning Grant helps with costs of planning and consultation (for applications > 5ha)

GRANT PROCESSES



- Grant approval can take a long time – easily 6 months for Govt schemes
- Factor into planning – can easily miss planting seasons
- Non-govt schemes simpler (eg Woodland Trust ‘More Woods’ – for smaller projects)
- Engage with FC Woodland creation Officer early – smooths the path later
- Poorly planned proposals will take longer
- Plan cashflow – schemes pay out after spend incurred

A LONG-TERM COMMITMENT

- Woodland creation is a long-term commitment
- Need a long-term woodland management plan (funding available through Countryside Stewardship)
- Consider grey squirrel and deer control – possibly collaboratively
- Enjoy your new woodland!

THANK YOU

Graham Clark

CLA

Tel 020 7235 0511

Email Graham.clark@cla.org.uk

www.cla.org.uk



The logo for CLA, featuring the letters 'CLA' in a bold, white, sans-serif font. A yellow swoosh underline is positioned beneath the 'A'. The logo is set against a dark teal rectangular background.

Integrating trees to increase farm productivity



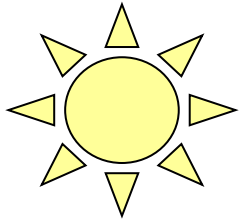
Ben Raskin



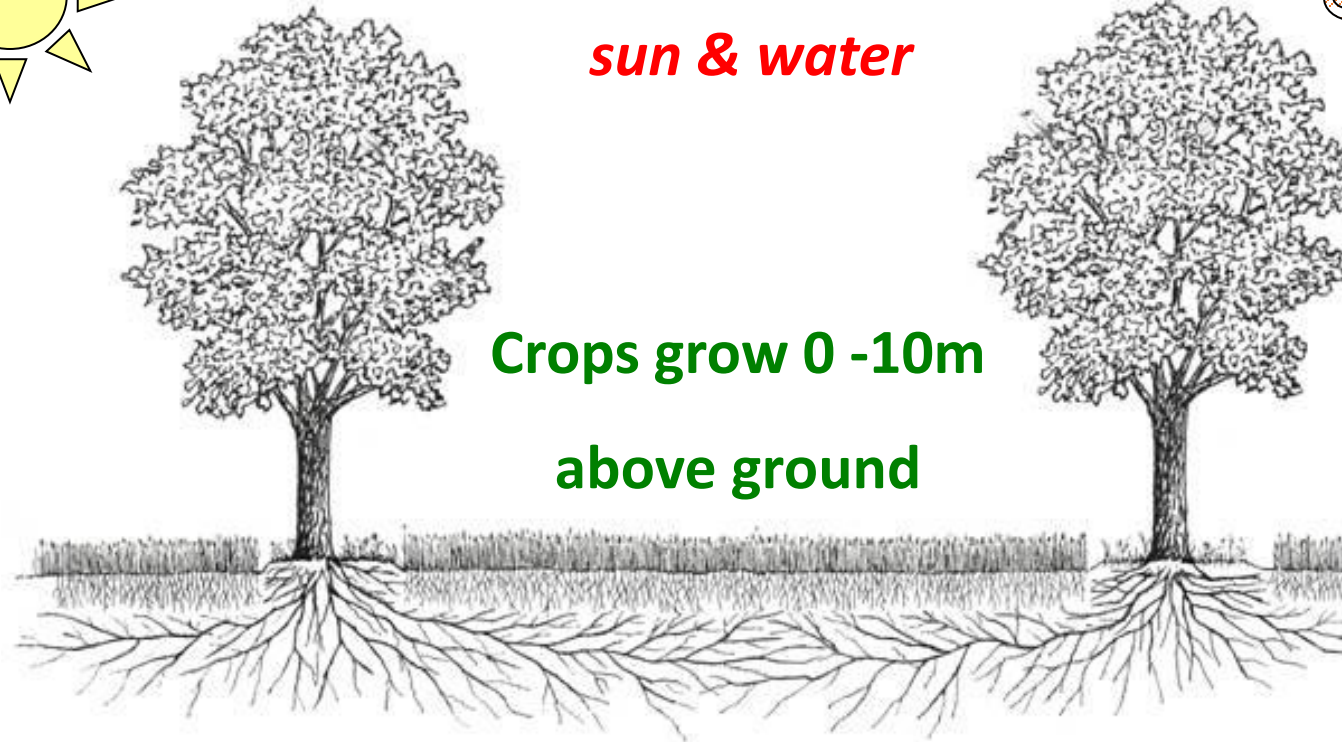
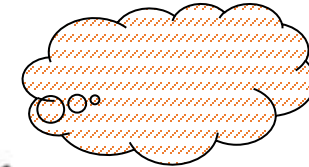
Don't be defined by definitions



Maximising resources



*Improved use of
sun & water*

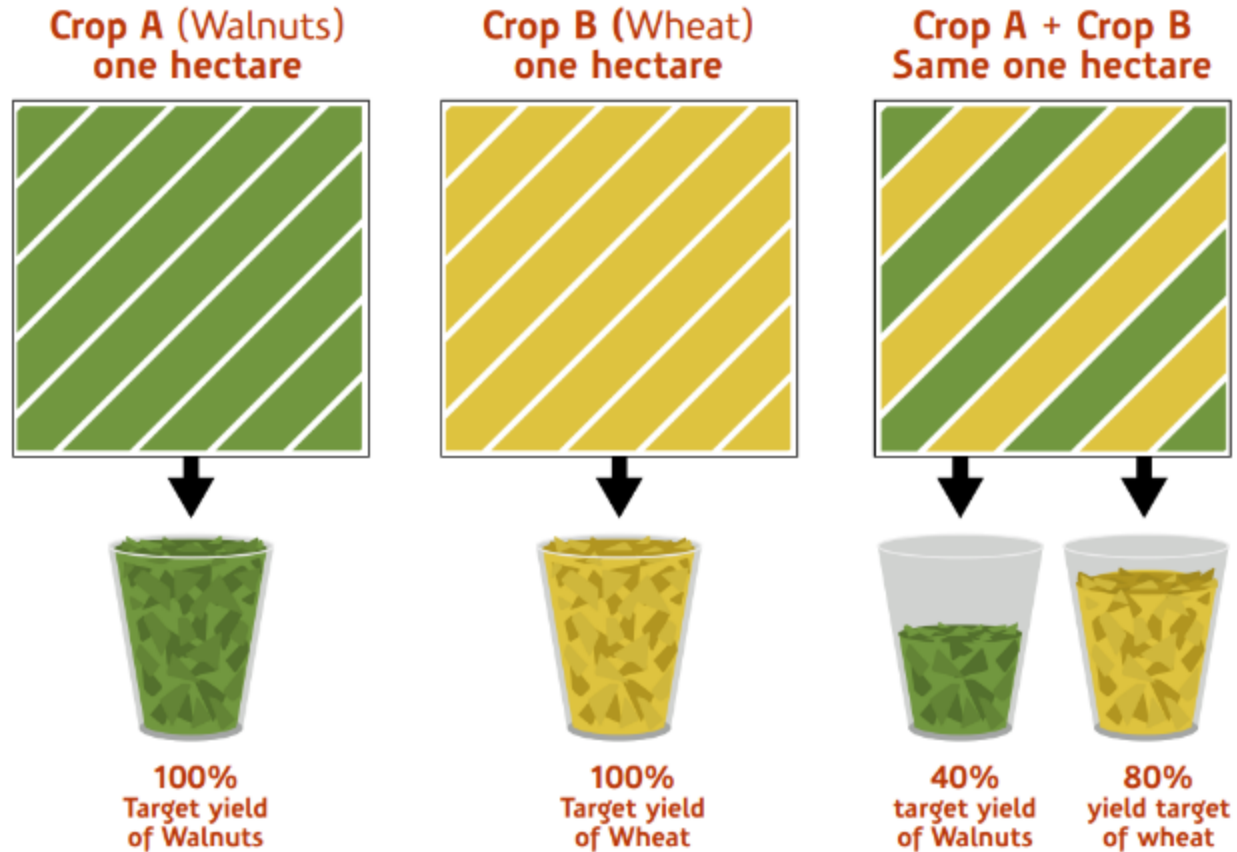


**Crops grow 0 -10m
above ground**

**Improved root spread,
nutrient use & reduced leaching**

Land Equivalent Ratio (LER)

Figure 8: Land Equivalence Ratio





Range of Different Agroforestry systems

Cropping – Silvoarable, Silvohorticultural, Food forests

Livestock – Silvopastoral, woodland grazing, shelterbelts, browsing blocks, single trees, alleys, hedges etc



Soil health and nutrition

Animal health and welfare



Tree and crop health





Wind and water



Resilience





Options for implementing on farm

Using existing trees and hedges

Shelterbelts

Grazed woodlands

Browsing blocks

Alleys

Using existing trees and hedges





Shelterbelts





Grazed woodlands





Browsing blocks





Alleys





**Cropping diversification
- choosing the crop and system**

Thank you!

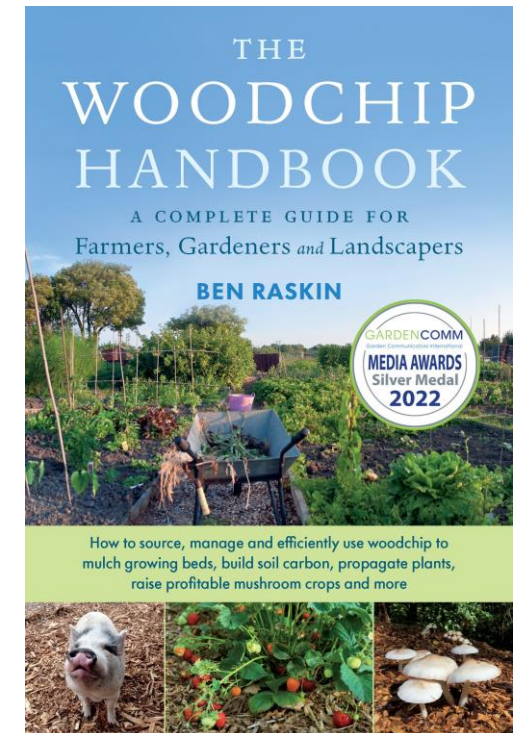


- [Grants and funding for agroforestry \(soilassociation.org\)](https://soilassociation.org)
- [AGFORWARD](#)
- [AFINET - Agroforestry Innovations Network | Agricology](#)
- [Farming & Homesteading | Chelsea Green Publishing](#)
- [Farm Woodland Forum | \(agroforestry.ac.uk\)](https://agroforestry.ac.uk)

Facebook Group – Agroforestry UK

Twitter - @Ben_Raskin


braskin@soilassociation.org



ADVICE.
INSPIRATION.
SUPPORT.

Q&A Session



 have your say #CLAWebinar



WEBINAR