



Gloucestershire  
Wildlife Trust



*Wilder*

OUR MANIFESTO FOR A  
**GLOUCESTERSHIRE**

**NATURE DOESN'T HAVE A VOICE OR AN MP, BUT PEOPLE DO, AND NATURE'S RECOVERY MUST BEGIN NOW. MAKE YOUR PLEDGE TO ACT FOR GLOUCESTERSHIRE'S WILDLIFE**

# IN A NUTSHELL

**IT MIGHT FEEL THAT WE ARE SURROUNDED BY WILDLIFE, BUT THE TRUTH IS FRIGHTENING. OVER THE PAST 70 YEARS 56% OF THE UK'S PLANTS, ANIMALS, INSECTS AND FUNGI HAVE DECLINED AND 1 IN 10 SPECIES ARE NOW THREATENED BY EXTINCTION.**

**I**n Gloucestershire, we have lost 70% of our traditional orchards and only small fragments of our wildflower-rich meadows remain. The common is becoming scarce, the scarce rare and the rare is disappearing altogether. Somehow, we have grown to accept that nature's ongoing decline is normal. It's not only wildlife that is in trouble; loss of wildlife and climate change is a huge threat to our economy and way of life.

We have lost so much but there is still time to put Gloucestershire's nature back into recovery. This is such a critical moment for wildlife that Gloucestershire Wildlife Trust felt we had to take action. This is our Manifesto for a Wilder Gloucestershire. It is not just for us, it's for everyone who cares about the future of the county. It draws upon the knowledge we have gained from nearly 60 years in wildlife conservation and the wisdom of our 28,000 members and 500 volunteers. Many of the ideas came from Gloucestershire's young people.

## **The foundations of a Wilder Gloucestershire**

- 1.** A strong Environment Act
- 2.** A bigger and better network of wild places
- 3.** Local leaders committed to nature's recovery
- 4.** People everywhere taking action for wildlife

## **We need you to help make seven changes that will create a Wilder Gloucestershire**

- More people restoring nature
- Nature at the heart of farm businesses
- Our NHS supports access to nature
- All children learn outdoors regularly
- Developments restore nature
- Reduce pollution
- Prepare for climate change

This manifesto outlines Gloucestershire Wildlife Trust's deepest fears for wildlife and the natural environment. It also states the actions that we believe are urgently needed to halt the current wildlife catastrophe and

restore nature. These are our thoughts, but we want to know what you think and what you can do to support nature's recovery.

**Nature can recover if we choose to help it and Gloucestershire's wildlife needs you to act now. We ask everyone reading this manifesto to do four things:**

- 1.** Sign our petition to local MPs calling for a strong Environment Act.
- 2.** Tell us your biggest concerns for wildlife and the natural environment and your ideas for solving them. [@gloswildlife](https://twitter.com/gloswildlife) on social media or [info@gloucestershirewildlifetrust.co.uk](mailto:info@gloucestershirewildlifetrust.co.uk)
- 3.** Make your promise to help deliver the seven changes for a wilder Gloucestershire.
- 4.** Share this Manifesto with your family and friends. [@gloswildlife](https://twitter.com/gloswildlife) on social media or [info@gloucestershirewildlifetrust.co.uk](mailto:info@gloucestershirewildlifetrust.co.uk)

# GLOUCESTERSHIRE IS A BEAUTIFUL PLACE. IT IS STILL HOME TO SOME REMARKABLE WILDLIFE AND WHEREVER WE ARE IN THE COUNTY, NATURE SHAPES OUR LIVES. WE ARE LUCKY ENOUGH TO LIVE IN A COUNTY THAT INCLUDES THE MAGICAL FOREST OF DEAN, THE MIGHTY SEVERN VALE AND THE WORLD-RENOWNED COTSWOLD HILLS.

**IT** might feel that we are surrounded by wildlife. The truth is that over the past 70 years 56% of the UK's plants, animals, insects and fungi have declined and 1 in 10 species are now threatened by extinction. In Gloucestershire, we have lost 70% of our traditional orchards and only small fragments of wildflower-rich meadows remain.

The common is becoming scarce, the scarce rare and the rare is disappearing altogether. Somehow, we have grown to accept that nature's ongoing decline is normal.

This really frightens everyone at Gloucestershire Wildlife Trust.

Britain has become one of the most nature-depleted countries in the world. We know this can feel overwhelming and depressing. Yet there is still time to put nature back into recovery and to rewild Gloucestershire.

It's not only wildlife that is in trouble; degradation of the environment and climate change are huge threats to our economy and way of life. People are increasingly suffering from a disconnection with nature. And; soils are washing away, as our rivers and the air we breathe are polluted.

For the first time in a generation the UK is making new laws that will shape the future of our environment.

The Environment Act which will be debated in 2019 could be a once in a lifetime opportunity to secure nature's recovery.

This is such a critical moment for wildlife that Gloucestershire Wildlife Trust had to take action. This is Our Manifesto for a Wilder

Gloucestershire. It is not just for us, it's for everyone who cares about the future of the county. We want to know what you think about our ideas and Gloucestershire's wildlife needs you to act now.

[www.gloucestershirewildlifetrust.co.uk/wilder-gloucestershire](http://www.gloucestershirewildlifetrust.co.uk/wilder-gloucestershire)

**'BRITAIN HAS BECOME ONE OF THE MOST NATURE-DEPLETED COUNTRIES IN THE WORLD'**



# WILDLIFE URGENTLY NEEDS EVERYONE TO ACT

**F**OR OVER A CENTURY THERE HAVE BEEN LOTS OF GOOD INTENTIONS, YET WE ARE STILL LOSING WILDLIFE. NATURE CAN RECOVER IF WE CHOOSE TO TAKE ACTION AND HELP IT. GLOUCESTERSHIRE WILDLIFE TRUST IS CALLING FOR GOVERNMENT AND PEOPLE EVERYWHERE TO HELP DELIVER FOUR FOUNDATIONS WHICH ARE VITAL IF WE ARE TO RESTORE GLOUCESTERSHIRE'S WILDLIFE

## 1. CAMPAIGN FOR A STRONG ENVIRONMENT ACT

Not everyone chooses to do the right thing for wildlife, so we need environmental laws to stop people polluting and destroying nature. We are calling for a strong Environment Act that protects wildlife and puts nature's recovery in law. It must include targets for restoring and connecting wild places and have an effective and independent watchdog to hold government and public bodies to account.

## 2. A BIGGER AND BETTER NETWORK OF WILD PLACES

There aren't enough wild places, and wildlife struggles to move between them. We must restore, create and connect a network of wild spaces that will support nature's recovery – a Nature Recovery Network. The Nature Recovery Network should map all the special wild places and identify where we need to restore lost habitats and create new places for wildlife to thrive. The Nature Recovery Network will be the blueprint that helps everyone to do a better job of protecting and restoring nature.

## 3. LOCAL LEADERS COMMITTED TO NATURE'S RECOVERY

We need Gloucestershire's decision makers to set targets and create plans that deliver nature's recovery. We want Local Authorities to change how they think about development and put nature at the heart of decision making. We want the Local Enterprise Partnership to lead a green growth plan for Gloucestershire's economy. We want schools to give all children the benefits of growing up in nature. We want the NHS to support people to access the health solutions the natural environment can provide.

## 4. PEOPLE EVERYWHERE MUST TAKE ACTION

Gloucestershire has thousands of people who are dedicated to protecting wildlife and wild places. Every day Gloucestershire Wildlife Trust works with farmers, businesses and other people who share our determination to save the natural world. Gloucestershire Wildlife Trust cannot restore wildlife on its own but if everyone acts we will succeed. We need your support, but most of all we need you to do something to help nature's recovery and encourage others to do the same.

**NATURE DOESN'T HAVE A VOICE OR AN MP, BUT PEOPLE DO, AND NATURE'S RECOVERY MUST BEGIN NOW. MAKE YOUR PROMISE TO ACT FOR GLOUCESTERSHIRE'S WILDLIFE**



# SEVEN CHANGES FOR A WILDER GLOUCESTERSHIRE

**G**LOUCESTERSHIRE WILDLIFE TRUST BELIEVES THAT JUST SEVEN CHANGES WOULD HALT WILDLIFE DECLINES AND CREATE A WILDER GLOUCESTERSHIRE. Visit our website for support and advice on how to make these changes [www.goucestershirewildlifetrust.co.uk/wildergoucestershire](http://www.goucestershirewildlifetrust.co.uk/wildergoucestershire)

## 1. MORE PEOPLE RESTORING NATURE

Gloucestershire's wildlife is disappearing, but it doesn't have to. By the next generation it will be too late. Nature reserves aren't enough, wildlife needs bigger, better and more joined up wild places to recover.

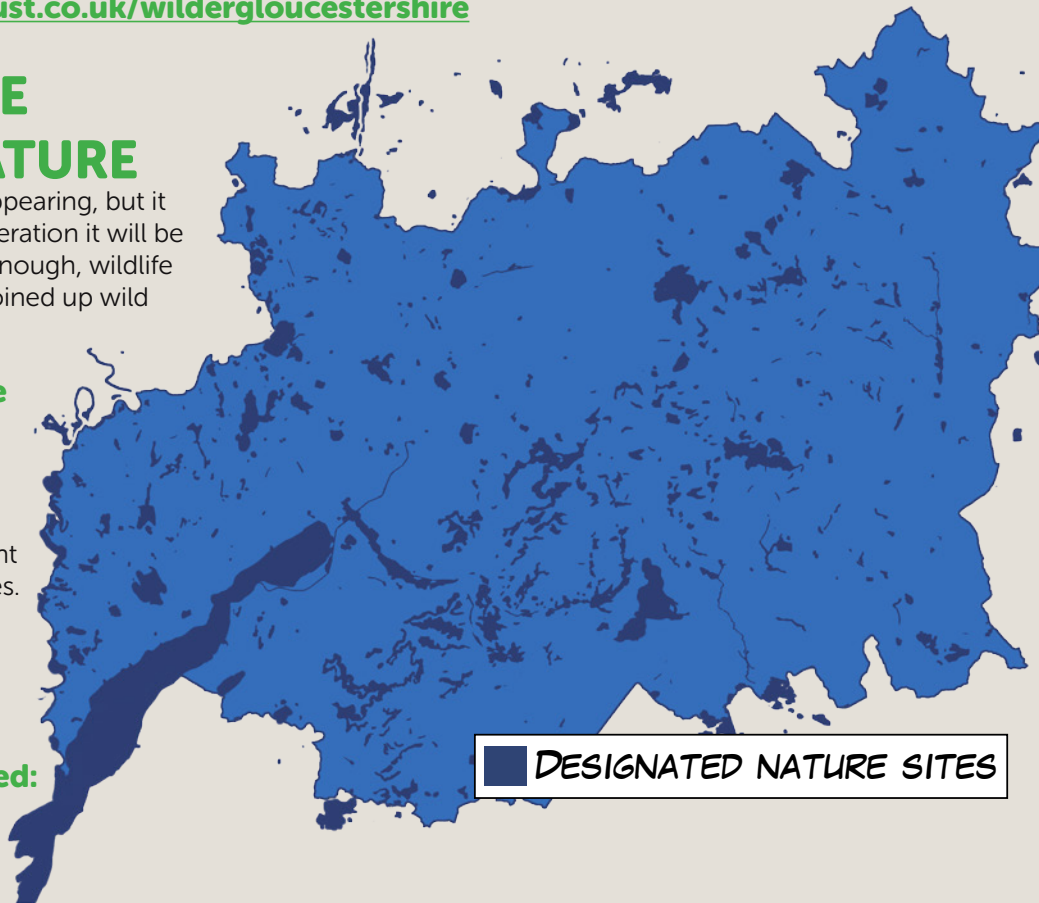
### What will Gloucestershire Wildlife Trust do?

We will have bigger nature reserves which are in better condition and will work with more landowners to connect important wildlife sites and create new ones.

**What can you do?** Create a space for nature in a garden or local green space.

### Help to get others involved:

If having nature's recovery supported by law is important to you then please contact your MP and tell them why. To find out how to do this visit [www.goucestershirewildlifetrust.co.uk/wildergoucestershire](http://www.goucestershirewildlifetrust.co.uk/wildergoucestershire)



'WILDLIFE NEEDS  
BIGGER, BETTER  
AND MORE JOINED  
UP WILD PLACES  
TO RECOVER'

## 2. NATURE AT THE HEART OF FARM BUSINESSES

Most of the land in Gloucestershire is still farmland. We know many farmers care about the environment, the management of water and the quality of soils. Wildlife can thrive on farmland, but farmers need more support to do this alongside the business of producing food.

**What will Gloucestershire Wildlife Trust do?** We will work with groups of farmers to support them to deliver agri-environment schemes that connect wild places and deliver better soils, cleaner water and more wildlife.

**What can you do?** Find out more about how your food is produced. Support wildlife friendly farmers by buying their produce.

**How can you help to get others involved?** Contact your school, hospital, local cafes and restaurants and ask them if they use wildlife friendly produce.

## 3. OUR NHS SUPPORTS ACCESS TO NATURE

For the NHS to survive and support a growing ageing population, more people need to be supported to stay healthy and nature has a big role to play. The natural environment is free to access, can help you to live a longer and happier life and could save the NHS millions. We need the NHS and GPs to support more people to access nature.

**What will Gloucestershire Wildlife Trust do?** We will extend our work with GPs and public health leaders to make the health benefits provided by the natural environment more accessible to everyone.

**What can you do?** Make a regular appointment to get outdoors in nature.

**How can you help to get others involved?** Encourage your GP to make the most of the health solutions provided by the natural environment. Share your stories about how being out in nature makes you feel with your friends and with Gloucestershire Wildlife Trust.

'SUPPORT WILDLIFE  
FRIENDLY FARMERS  
BY BUYING THEIR  
PRODUCE'



'THE NATURAL  
ENVIRONMENT IS  
FREE TO ACCESS,  
CAN HELP YOU  
TO LIVE A LONGER  
AND HAPPIER LIFE  
AND COULD SAVE THE  
NHS MILLIONS'

## 4. ALL CHILDREN LEARN OUTDOORS

Children now spend less time outdoors than prison inmates. For many children, the habits of a lifetime are established at school. Too many children don't experience nature or learn about their environment. Without the right experiences – at schools, at home and in their communities – children won't be prepared for the huge threats of living with the consequences of climate change and further wildlife extinction. We need every child to have regular access to outdoor learning.

**What will Gloucestershire Wildlife Trust do?** We will expand our learning programme to work with one in three primary and one in five secondary schools in Gloucestershire.

**What can you do?** Make time to take a young person outside in nature.

**How can you help to get others involved?** Ask your local school about their commitment to outdoor learning.

**'MAKE TIME TO TAKE A YOUNG PERSON OUTSIDE IN NATURE'**

## 5. DEVELOPMENTS RESTORE NATURE

We recognise that Gloucestershire needs housing, but too many houses are built at the expense of wildlife. Our Building with Nature benchmark shows that we can design places for people to live where nature thrives. Roads, housing and commercial development must all deliver a net gain for wildlife. They can do this if they are planned and built in the right way.

**'OUR BUILDING WITH NATURE BENCHMARK SHOWS THAT WE CAN DESIGN PLACES FOR PEOPLE TO LIVE WHERE NATURE THRIVES'**

**What will Gloucestershire Wildlife Trust do?** We will push for all Gloucestershire developments to deliver a net gain for wildlife by encouraging planners and developers to adopt the Building with Nature standards.

**What can you do?** Demand that spaces for wildlife and the Building with Nature standards are included in your Local Development Plan and Neighbourhood Development Plan.

**How can you help to get others involved?** Contact your local parish, district and county councillors and tell them why improving green spaces for wildlife is important to you.

**'IS YOUR WASHING MACHINE POLLUTING YOUR LOCAL RIVER?'**

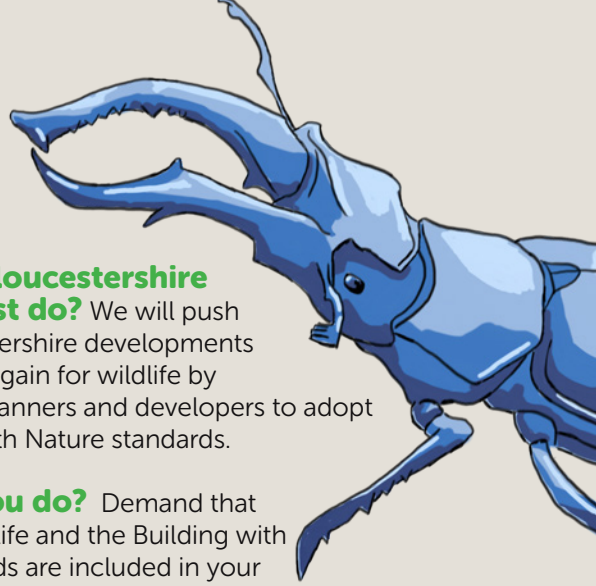
## 6. REDUCE POLLUTION

David Attenborough's Blue Planet documentary highlighted to the nation the devastating impact of single-use plastic and pollution on wildlife, particularly in our seas. It's also an issue that is close to home, as Gloucestershire's rivers are often affected by pollution. We live in a throwaway society, but people increasingly want to make more sustainable choices and they need support to do this.

**What will Gloucestershire Wildlife Trust do?** We will run a campaign on wildlife and pollution showing people how they can make simple changes to reduce their environmental impact.

**What can you do?** Check that your washing machine connection is not polluting your local river with washing detergent. If you don't already have one buy a water bottle or reusable cup.

**How can you help to get others involved?** Ask all the shops, cafes and restaurants you visit about their use of plastics and their approach to reducing waste.



## 7. PREPARE FOR CLIMATE CHANGE

The Severn is the largest river in Britain, and many people and open places in Gloucestershire have been seriously affected by flooding. Climate change is one of the biggest threats facing our county - for people and wildlife. It will impact everything from how we produce our food to the resilience of our homes and businesses. We are massively unprepared for this, but nature can help us by reducing the impact of sea level rises and increases in extreme weather.

**What will Gloucestershire Wildlife Trust do?** We want to extend our pioneering work on Natural Flood Management across the county and will seek support and funding to achieve this. We will also lead a Nature Recovery Network that safeguards the future of Gloucestershire's wildlife

**What can you do?** Find out how big your environmental footprint is and make one simple promise to reduce it.

**How can you help to get others involved?** Ask your MP and local councillors what action they are taking to prepare your community for climate change.

'CLIMATE CHANGE IS  
ONE OF THE BIGGEST  
THREATS FACING OUR  
COUNTY FOR PEOPLE  
AND WILDLIFE'

## 'WHERE DID THESE IDEAS COME FROM?'

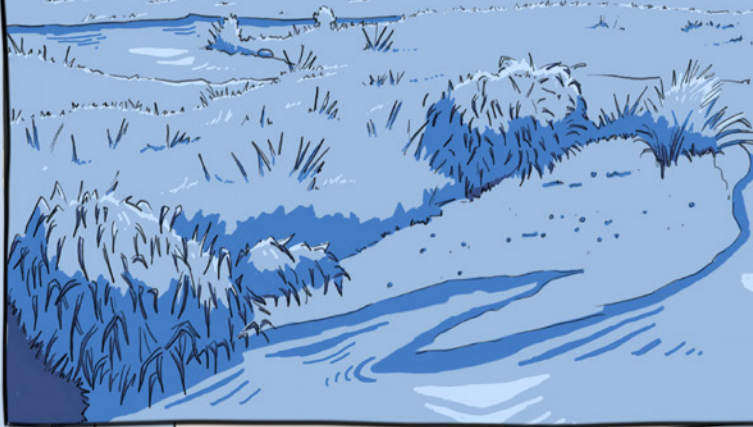
MANY OF THE IDEAS IN  
THIS MANIFESTO EMERGED  
FROM GLOUCESTERSHIRE  
WILDLIFE TRUST'S 'OUR  
WILD FUTURE' WORKSHOP  
FOR YOUNG PEOPLE FROM  
ACROSS GLOUCESTERSHIRE.  
THEY ALSO COME FROM  
THE KNOWLEDGE WE HAVE  
GAINED FROM NEARLY  
60 YEARS IN WILDLIFE  
CONSERVATION AND THE WISDOM  
OF OUR 28,000 MEMBERS AND 500  
VOLUNTEERS. WE ALSO WANT TO HEAR  
ABOUT YOUR IDEAS AND ACTIONS TO  
HELP RESTORE NATURE.





# WHAT WOULD A WILDER GLOUCESTERSHIRE LOOK LIKE?

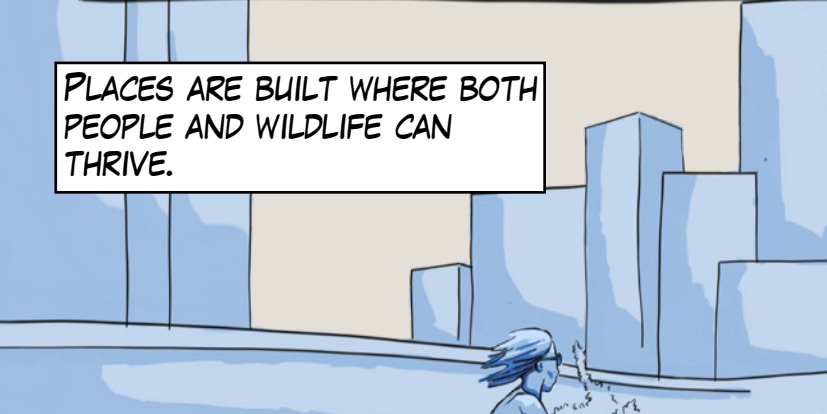
WILD PLACES ARE CREATED, WHICH ARE BIGGER, BETTER AND EASY FOR WILDLIFE TO MOVE BETWEEN.



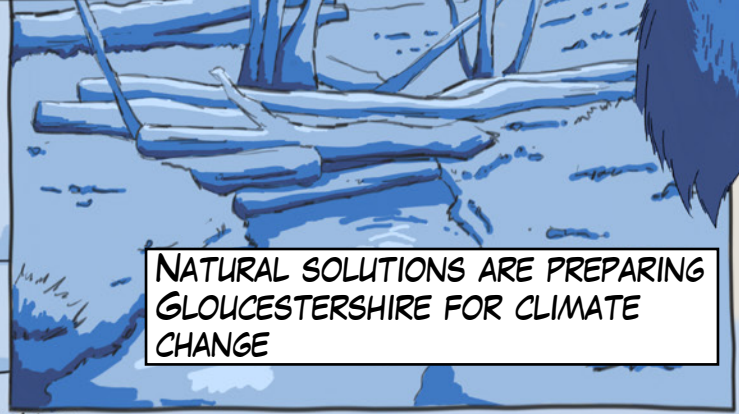
LOST WILDLIFE IS RESTORED



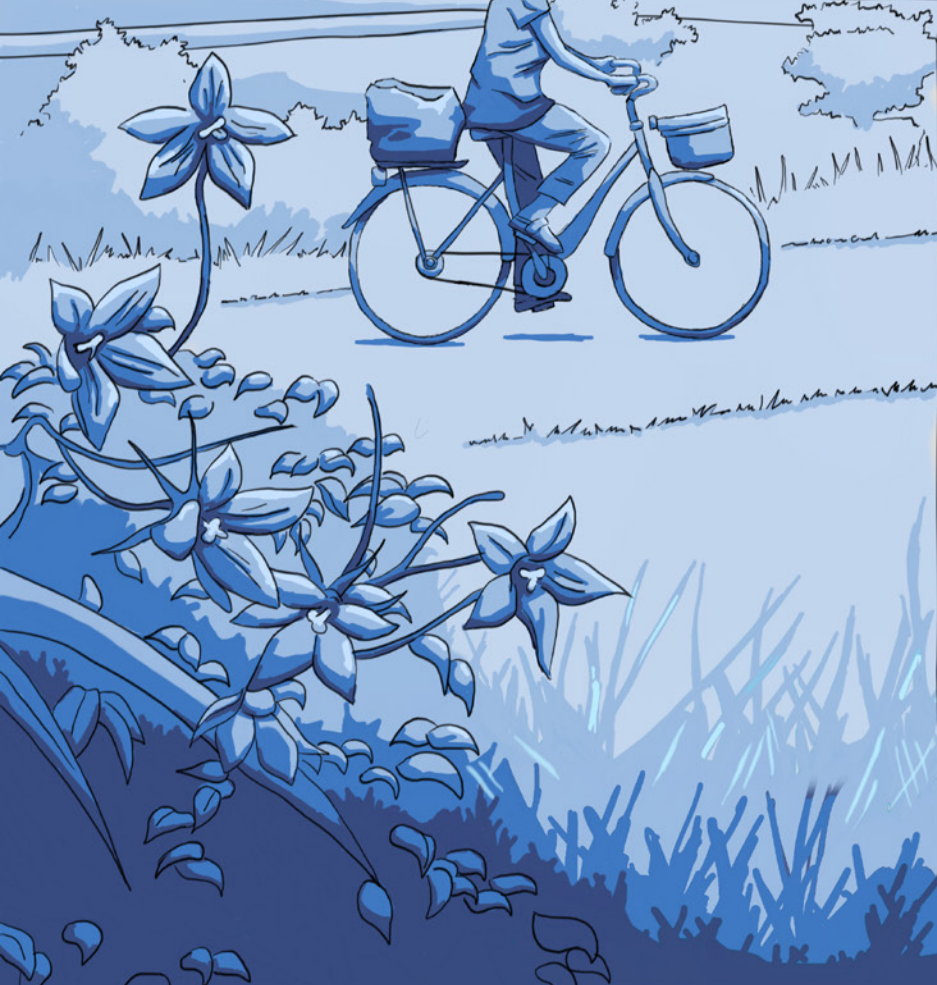
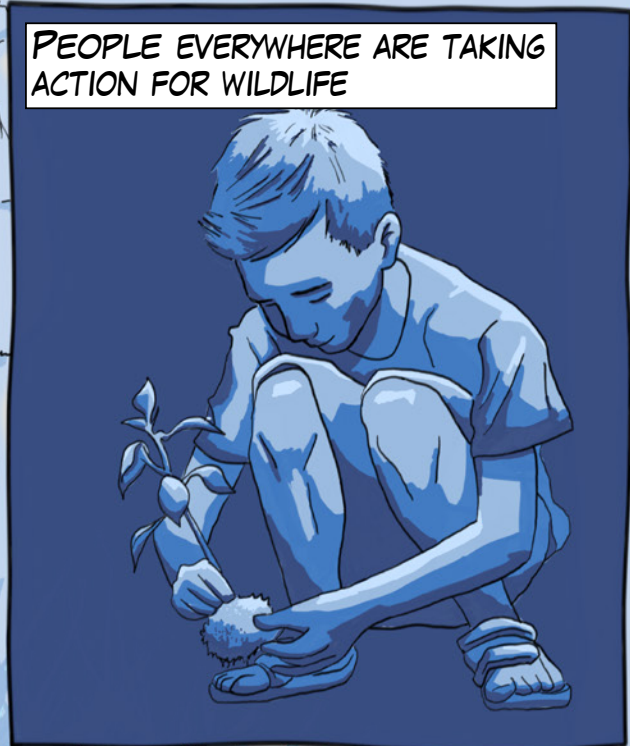
PLACES ARE BUILT WHERE BOTH PEOPLE AND WILDLIFE CAN THRIVE.



NATURAL SOLUTIONS ARE PREPARING GLOUCESTERSHIRE FOR CLIMATE CHANGE



PEOPLE EVERYWHERE ARE TAKING ACTION FOR WILDLIFE



# GLOUCESTERSHIRE'S WILDLIFE NEEDS YOUR HELP

NATURE DOESN'T HAVE A VOICE  
OR AN MP, BUT PEOPLE DO, AND  
NATURE'S RECOVERY MUST BEGIN  
NOW. MAKE YOUR PROMISE TO ACT  
FOR GLOUCESTERSHIRE'S  
WILDLIFE



'WE NEED YOUR  
HELP. OUR HOMES  
ARE UNDER  
THREAT AND  
THERE ARE FEWER  
PLACE FOR US TO  
FIND FOOD. WE  
ARE NOT ALONE,  
THOUSANDS OF  
PLANTS, INSECTS,  
BIRDS, MAMMALS  
AND OTHER  
SPECIES ARE  
FINDING IT HARDER  
TO SURVIVE. WE  
DON'T HAVE AN  
MP, BUT YOU  
DO. PLEASE GIVE  
US A VOICE AND  
ASK YOUR MP  
TO SECURE OUR  
FUTURE'.



# LET US KNOW WHAT YOU THINK AND MAKE YOUR PROMISE TO ACT FOR GLOUCESTERSHIRE'S WILDLIFE

1. SIGN OUR PETITION TO LOCAL MPs CALLING FOR A STRONG ENVIRONMENT ACT.
2. TELL US YOUR BIGGEST CONCERNS FOR WILDLIFE AND THE NATURAL ENVIRONMENT AND YOUR IDEAS FOR SOLVING THEM.
3. MAKE YOUR PROMISE TO HELP DELIVER THE SEVEN CHANGES FOR A WILDER GLOUCESTERSHIRE.
4. SHARE THIS MANIFESTO WITH YOUR FAMILY AND FRIENDS.

FOR ADVICE ON HOW TO TAKE ACTION FOR WILDLIFE  
PLEASE VISIT

[www.gloucestershirewildlifetrust.co.uk/wildergloucestershire](http://www.gloucestershirewildlifetrust.co.uk/wildergloucestershire)

SHARE YOUR ACTIONS WITH US

[@GLOSWILDLIFE](https://www.instagram.com/gloswildlife)



Email: [info@gloucestershirewildlifetrust.co.uk](mailto:info@gloucestershirewildlifetrust.co.uk)  
Gloucestershire Wildlife Trust  
Conservation Centre, Robinswood Hill  
Country Park, Reservoir Road,  
Gloucester, GL4 6SX  
Phone: 01452 383333