

Gloucestershire Wildlife Trust

A look back on our year 2018/19



Gloucestershire

Protecting wildlife for the future

Gloucestershire
Wildlife Trust
connects and improves
the county's wildlife
and wild places.

We have a vision where
each year there is more
wildlife, more wild
places and more people
with a connection to
the natural world.

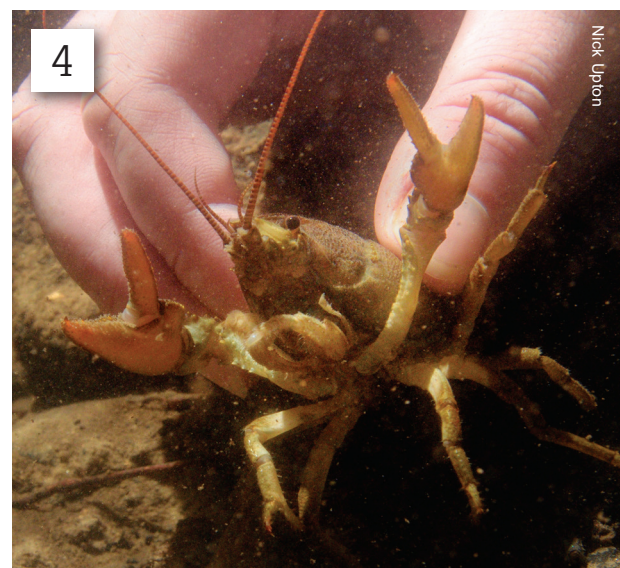
This year sees the culmination of GWT's feasibility study into the reintroduction of pine martens to the Forest of Dean.



A year in pictures

In the past 12 months our staff and volunteers, with funding and support from our members, trusts, organisations and companies, have worked hard to restore nature throughout Gloucestershire.

Here are some of our highlights.





Ruth Davey

1. As part of the conservation grazing project in the Forest of Dean, a successful ten-week grazing trial was completed with English Longhorn cattle. The Trust is now purchasing six Highland cows to continue the landscape scale restoration of open heathland habitats in partnership with Foresters Forest Heritage Lottery Fund programme.

2. Dimmel's Dale was one of the few remaining parts of the Golden Valley not managed for wildlife. GWT has acquired the site thanks to a generous donation in memory of long-term volunteer, David Harman, and a public appeal.

3. Thanks to the support of the Cradle of the Cotswolds National Lottery Heritage Fund, GWT has improved the diversity of wildflowers at Greystones Farm, a Site of Special Scientific Interest for its wildflower meadows.

4. By translocating white-clawed crayfish to Snow's Farm nature reserve, GWT aims to help protect one of our most endangered, native species.

5. Our 'Wild For Nature' project supported vulnerable women by creative contact with wild places.

6. GWT gave a 'Wild Welcome' to refugees living in Gloucestershire and introduced them to local wildlife.

7. Our new learning programme at Greystones brought alive the Iron Age and the natural history of the site to school pupils across the region.

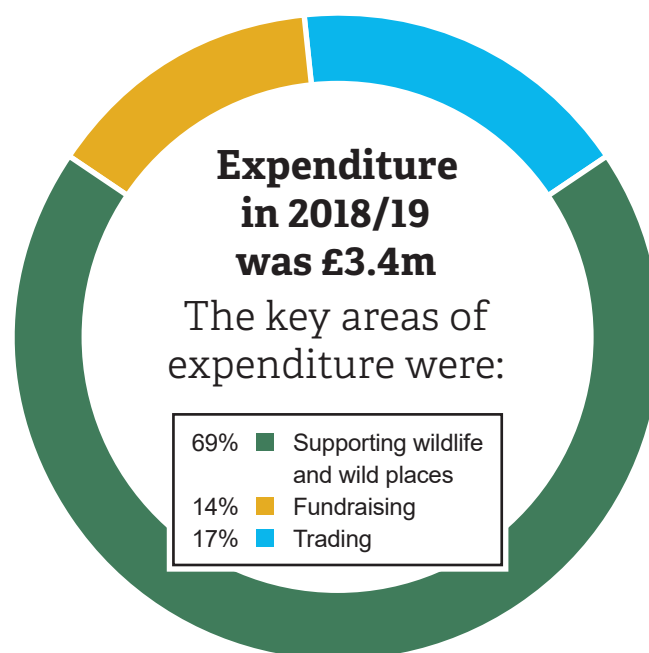
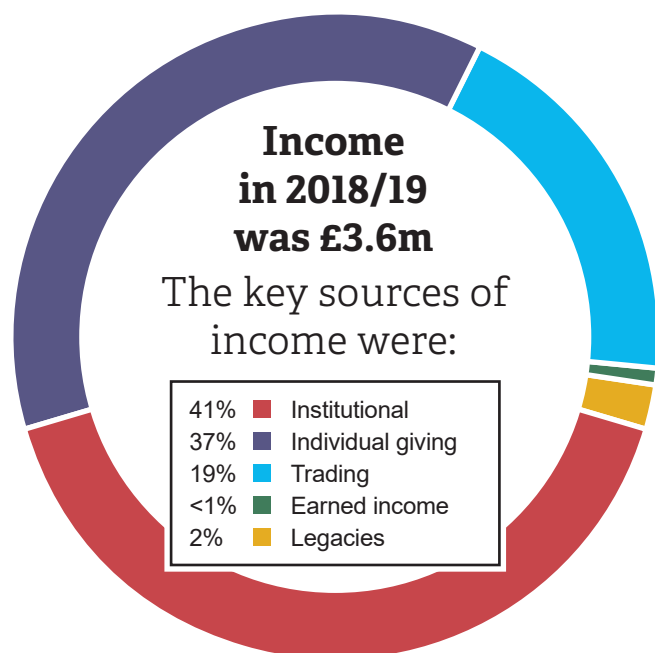


Anne-Marie Randall



Thank you

This year you have helped us protect more wildlife and wild places, and connect more people with nature.



This work was only possible by support from members of the Trust, Wildlife Guardians, Patrons of the Trust, supporters and volunteers.

Alice Noakes Memorial Charitable Trust
Biffa Award
Box Gardening Club
Chalford Parish Council
Charles Irving Charitable Trust
Cheltenham Borough Council
Cheltenham Borough Homes
Co-op Local Community Fund
Dent-Brocklehurst Family Charity Trust
Dove Construction
D'Oyly Carte Charitable Trust
Ecclesiastical Insurance Group
Enovert Community Trust
Environment Agency
Esmée Fairbairn Foundation
European Agricultural Fund for Rural Development (EAFRD)
European Regional Development Fund (ERDF)
Forest Holidays
Forest of Dean District Council
Forest of Dean Local Area Group
Forestry Commission
G R Lane Health Products Limited
George Cadbury Fund
GFirst LEP CIC
Gloucester City Council
Gloucester City Homes
Gloucester Rotary Club
Gloucestershire County Council
Gloucestershire Gateway Trust

Gloucestershire Naturalists Society
GloucestershireLive Cash for Communities
Gordon Gray Trust
Grow Wild Kew Gardens
Grundon Waste Management
Hobson Charity Ltd
Hydro Components UK Limited
Ibstock Enovert Trust
International Plywood Co
KW Financial Services Limited
Langdale Trust
Lochlands Trust
M V Hillhouse Trust
Ministry for Housing, Local Government and Communities (MHLGC)
Montague Panton Animal Welfare Trust
Morrisons Foundation
Mott MacDonald Limited
Mrs Constance Taylor Marr Dunn Charitable Trust
National Trust
NHS Gloucestershire Clinical Commissioning Group
People's Postcode Lottery
Police and Crime Commissioner for Gloucestershire
Rural Payments Agency
Severn Rivers Trust
Severn Trent Water
Simpson Education and Conservation Trust

South West Environmental Network
St James Place Charitable Foundation
Stroud District Council
Sudeley Castle
Thames Water Community Fund
The Banister Charitable Trust
The Conservation Foundation (Wessex Watermark Award)
The Holroyd Foundation
The Langtree Trust
The National Lottery Community Fund
The National Lottery Heritage Fund
The Rowlands Trust
The Saintbury Trust
The Waterloo Foundation
The Winstone Charitable Trust
Verdon-Smith Family Charitable Trust
Westmoreland Limited
Wild Trout Trust River and Wetland Community Days
Wildlife Travel
Willans

Our full Annual Report and Accounts are published on our website. Find them in the About section, under Governance, or call us for a copy.

Gloucestershire Wildlife Trust

Phone: 01452 383333

Website: gloucestershirowildlifetrust.co.uk

Registered Charity Number: 232580