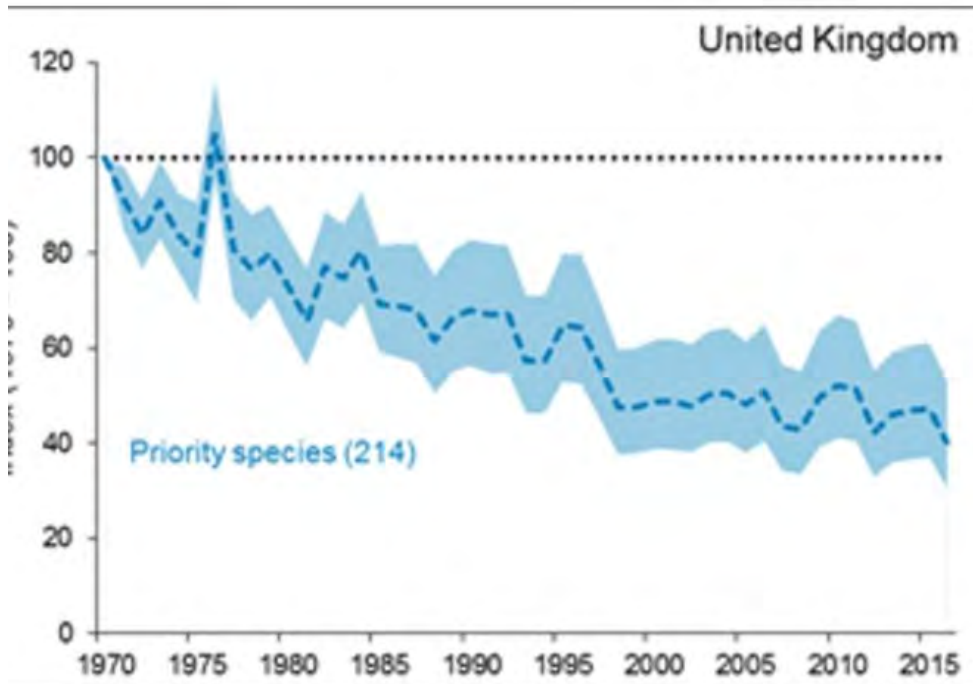




Gloucestershire



ENGLAND'S BIODIVERSITY IS DECLINING

13%
of species in England are threatened with extinction from Great Britain

36
plant species have become extinct

SINCE 1970...
More species in England have seen their populations decrease than increase:

35% have decreased	34% little change	31% have increased
---------------------------	--------------------------	---------------------------

We have seen big changes in where England's wildlife is found:

31% found in fewer places	45% little change	24% found in more places
----------------------------------	--------------------------	---------------------------------

Climate change

THE GREATEST DRIVERS OF CHANGE IN ENGLAND ARE...

- Agricultural management
- Urbanisation
- Freshwater management
- Pollution
- Invasive non-native species
- Fisheries
- Woodland management

CLIMATE CHANGE IS HAVING AN INCREASING IMPACT ON NATURE IN THE UK

- 48%** of moth decline is due to climate change
- 60%** of aphid increase is due to climate change

The UK's kittiwake population has declined by **70%** since 1986 as climate change has reduced the availability of sandeels, a key food source in breeding season

Migratory birds are arriving and laying eggs earlier:

- Swallows are arriving in the
- Great tits lay their eggs on

60S



2019-08-28 16:40:12

The Guardian

Pine martens released to secret location in Forest of Dean

2 days ago



The Times

Pine martens return to scare away grey squirrels

2 days ago



BBC News

Pine martens returned to Forest of Dean after facing extinction

2 days ago



The Telegraph

Britain's pine marten population to double overnight in conservation effort

3 days ago



From Twitter



Tom Holland ✓
@holland_tom

First beavers, now pine martens: the Forest of Dean is clearly the go-to place for reintroducing lost species to England.

<https://t.co/xkZR4sZr0n>



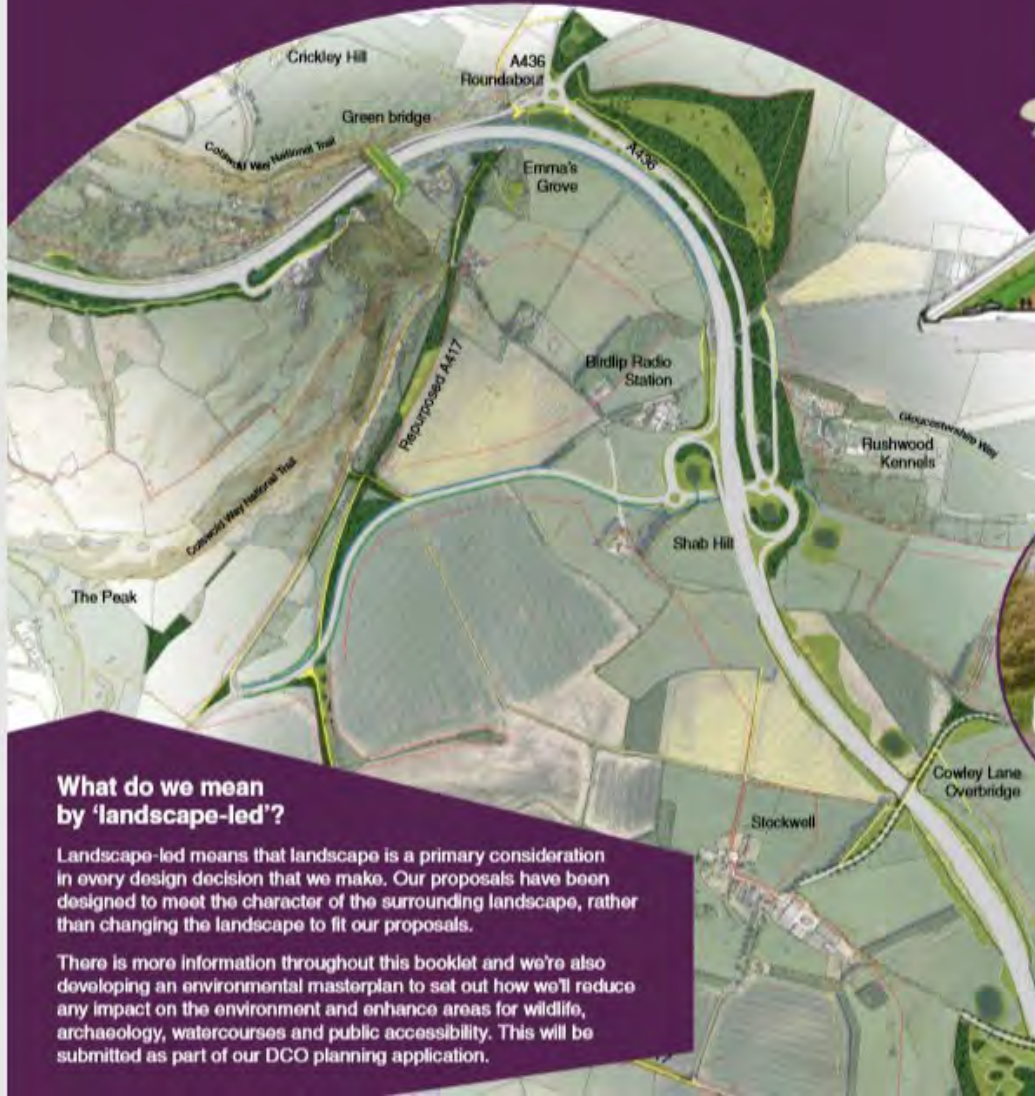
Molly Scott Cato MEP ✓
@MollyMEP

Pine martens released to secret location in Forest of Dean Great to see these beautiful animals back in my patch. Apparently they can help to control the invasive grey squirrels #rewilding

<https://t.co/QIW95Z5Q0z>

The scheme vision – reconnecting the landscape

As part of this improvement, we want to create a landscape-led highways scheme that will deliver a safe and resilient free-flowing road while conserving and enhancing the special character of the Cotswolds AONB; reconnecting landscape and ecology; bringing about landscape, wildlife and heritage benefits, including enhanced residents' and visitors' enjoyment of the area; improving quality of life for local communities; and contributing to the health of the economy and local businesses.



Artist's impression of a green bridge see page 11



Dry stone walling



Native woodland



Native hedgerow



Limestone grassland



Repurposed A417



Barn owl



Verges

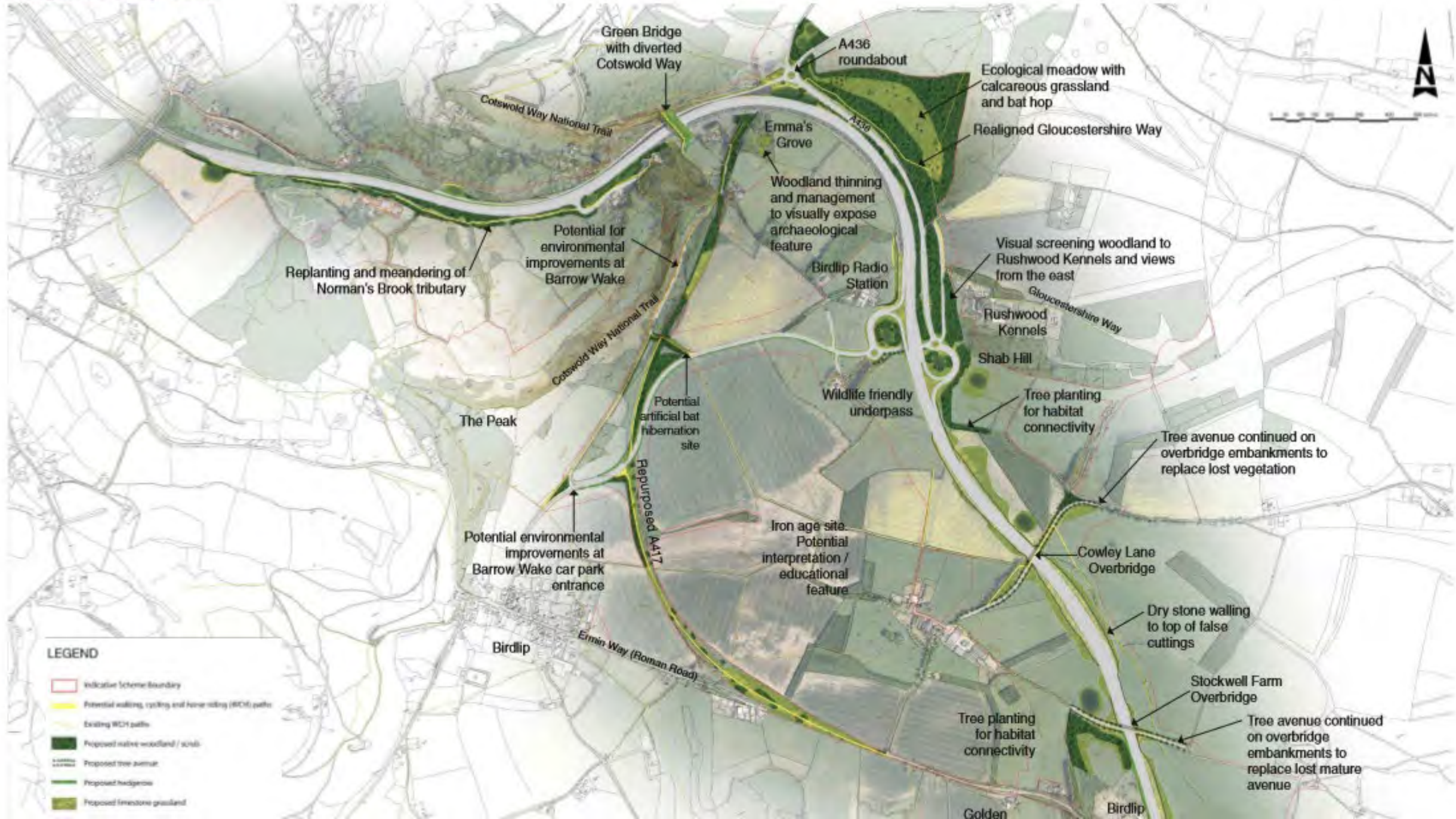
What do we mean by 'landscape-led'?

Landscape-led means that landscape is a primary consideration in every design decision that we make. Our proposals have been designed to meet the character of the surrounding landscape, rather than changing the landscape to fit our proposals.

There is more information throughout this booklet and we're also developing an environmental masterplan to set out how we'll reduce any impact on the environment and enhance areas for wildlife, archaeology, watercourses and public accessibility. This will be submitted as part of our DCO planning application.



Mitigation proposals



LEGEND

- Indicative Scheme Boundary
- Potential walking, cycling and horse riding (WCH) paths
- Existing WCH paths
- Proposed native woodland / scrub
- Proposed tree avenue
- Proposed hedgerow
- Proposed limestone grassland

A satellite night view of Gloucestershire, England, showing city lights and a bright green laser beam emanating from the center of the county. The background is a dark blue sky.

gfirst[®] LEP
growing gloucestershire

What they're saying...

WORRIES:

Climate change

Money

Uncertainty

Global warming

Career prospects

WORST THING:

- public transport and bus services
 - drugs and crime
 - boring
 - shops aren't good enough
 - too expensive
 - poor job opportunities
-

BEST THING:

- the countryside and scenery
- places and the environment
- friendly with good communities
- safe

Should I stay or should I go?

What would make Gloucestershire a magnet to you?

- 85% - care for the environment**
- 84% - clean, safe streets**
- 84% - things to do and places to go**
- 82% - healthy people**
- 80% - happy people**

Why would you leave Gloucestershire?

- 70% - for a job**
- 64% - for University**
- 38% - for family**
- 37% - to move to a bigger city**
- 32% - for a different climate**

Green



This proposition aligns with the government's Grand Challenges for Clean Growth, Future of Mobility, and AI & the Data Economy.

Gloucestershire has the potential to be **the greenest place to live and work** in England.

We want to:

- establish Gloucestershire as a **leader in sustainable growth** by developing a baseline to determine how best to protect, maintain and enhance our natural capital assets.
- put clean growth at the heart of investment decisions and new developments.
- build on local green capabilities in the private sector.
- reduce carbon emissions to **net zero by 2050** with aspirations to go further and faster.



Wilder
FUTURE



Search



Departments

Worldwide

How government works

Consultations

Statistics

News and communication

[Home](#)

News story

Stronger protections for the environment move closer as landmark Bill takes shape

New measures to enhance wildlife, transform our waste system and improve the resilience of water supplies set out in



OUR WILD FUTURE

WORKSHOP 1: WHAT ARE YOUR ENVIRONMENTAL CONCERNS NOW?





Gloucestershire
Wildlife Trust



Wilder

OUR MANIFESTO FOR A
GLOUCESTERSHIRE

WILDLIFE URGENTLY NEEDS EVERYONE TO ACT

FOR OVER A CENTURY THERE HAVE BEEN LOTS OF GOOD INTENTIONS, YET WE ARE STILL LOSING WILDLIFE. NATURE CAN RECOVER IF WE CHOOSE TO TAKE ACTION AND HELP IT. GLOUCESTERSHIRE WILDLIFE TRUST IS CALLING FOR GOVERNMENT AND PEOPLE EVERYWHERE TO HELP DELIVER FOUR FOUNDATIONS WHICH ARE VITAL IF WE ARE TO RESTORE GLOUCESTERSHIRE'S WILDLIFE

1. CAMPAIGN FOR A STRONG ENVIRONMENT ACT

Not everyone chooses to do the right thing for wildlife, so we need environmental laws to stop people polluting and destroying nature. We are calling for a strong Environment Act that protects wildlife and puts nature's recovery in law. It must include targets for restoring and connecting wild places and have an effective and independent watchdog to hold government and public bodies to account.

2. A BIGGER AND BETTER NETWORK OF WILD PLACES

There aren't enough wild places, and wildlife struggles to move between them. We must restore, create and connect a network of wild spaces that will support nature's recovery – a Nature Recovery Network. The Nature Recovery Network should map all the special wild places and identify where we need to restore lost habitats and create new places for wildlife to thrive. The Nature Recovery Network will be the blueprint that helps everyone to do a better job of protecting and restoring nature.

3. LOCAL LEADERS COMMITTED TO NATURE'S RECOVERY

We need Gloucestershire's decision makers to set targets and create plans that deliver nature's recovery. We want Local Authorities to change how they think about development and put nature at the heart of decision making. We want the Local Enterprise Partnership to lead a green growth plan for Gloucestershire's economy. We want schools to give all children the benefits of growing up in nature. We want the NHS to support people to access the health solutions the natural environment can provide.

4. PEOPLE EVERYWHERE MUST TAKE ACTION

Gloucestershire has thousands of people who are dedicated to protecting wildlife and wild places. Every day Gloucestershire Wildlife Trust works with farmers, businesses and other people who share our determination to save the natural world. Gloucestershire Wildlife Trust cannot restore wildlife on its own but if everyone acts we will succeed. We need your support, but most of all we need you to do something to help nature's recovery and encourage others to do the same.

NATURE DOESN'T HAVE A VOICE OR AN MP, BUT PEOPLE DO, AND NATURE'S RECOVERY MUST BEGIN NOW. MAKE YOUR PROMISE TO ACT FOR GLOUCESTERSHIRE'S WILDLIFE

TAKE
ACTION FOR
WILDLIFE
THIS WAY

NATURE DOESN'T HAVE A VOICE OR AN MP, BUT PEOPLE DO, AND NATURE'S RECOVERY MUST BEGIN NOW. MAKE YOUR PLEDGE TO ACT FOR GLOUCESTERSHIRE'S WILDLIFE

TAKE
ACTION FOR
WILDLIFE
THIS WAY

IN A NUTSHELL

IT MIGHT FEEL THAT WE ARE SURROUNDED BY WILDLIFE, BUT THE TRUTH IS FRIGHTENING. OVER THE PAST 70 YEARS 56% OF THE UK'S PLANTS, ANIMALS, INSECTS AND FUNGI HAVE DECLINED AND 1 IN 10 SPECIES ARE NOW THREATENED BY EXTINCTION.

IN Gloucestershire, we have lost 70% of our traditional orchards and only small fragments of our wildflower-rich meadows remain. The common is becoming scarce, the scarce rare and the rare is disappearing altogether. Somehow, we have grown to accept that nature's ongoing decline is normal. It's not only wildlife that is in trouble, loss of wildlife and climate change is a huge threat to our economy and way of life.

The foundations of a Wilder Gloucestershire

1. A strong Environment Act
2. A bigger and better network of wild places
3. Local leaders committed to nature's recovery
4. People everywhere taking action for wildlife

We need you to help make seven changes that will create a Wilder Gloucestershire

- More people restoring nature
- Nature at the heart of farm businesses
- Our NHS supports access to nature
- All children learn outdoors regularly
- Developments restore nature
- Reduce pollution
- Prepare for climate change

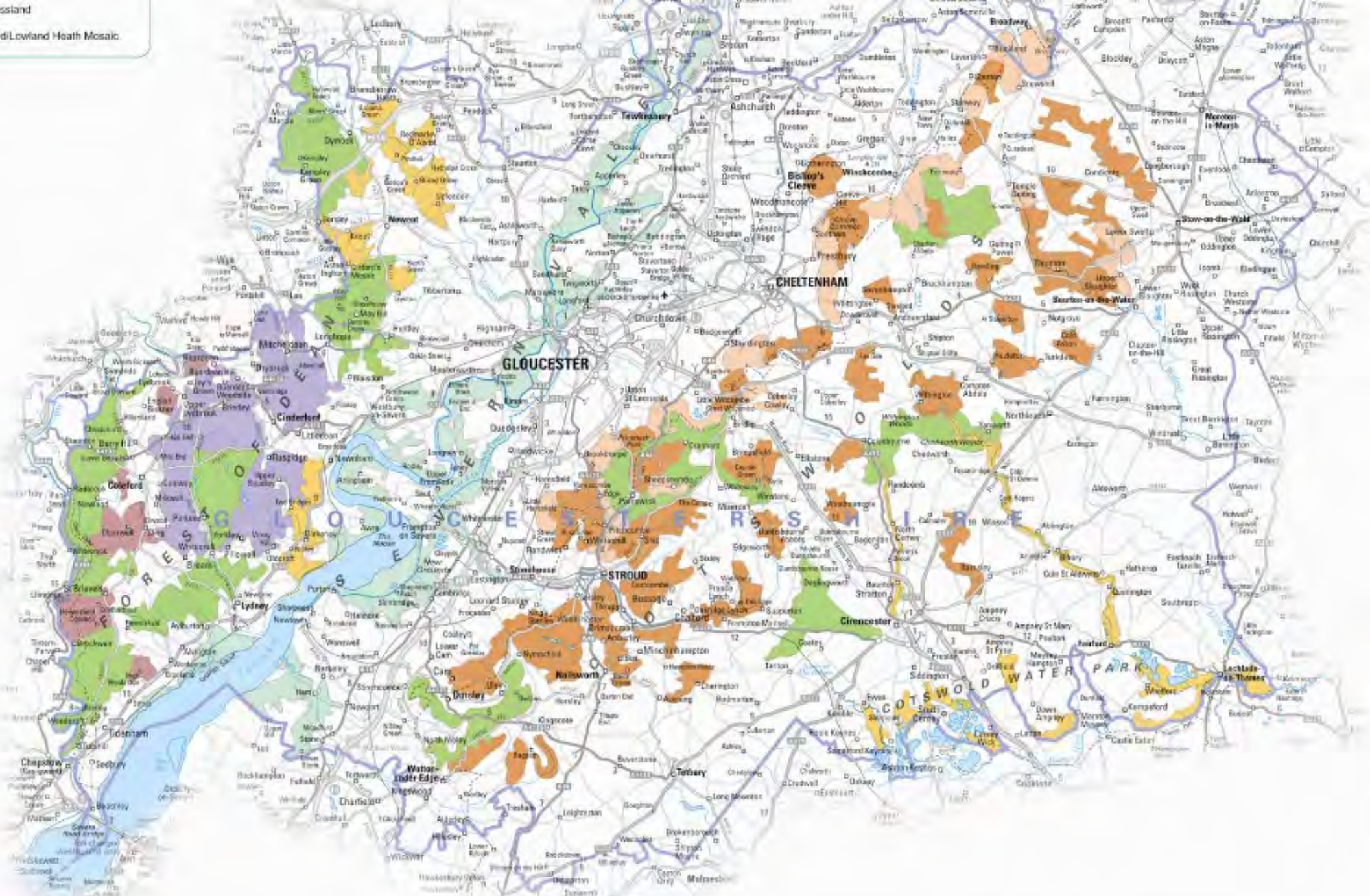
This manifesto outlines Gloucestershire Wildlife Trust's deepest fears for wildlife and the natural environment. It also states the actions that we believe are urgently needed to halt the current wildlife catastrophe and

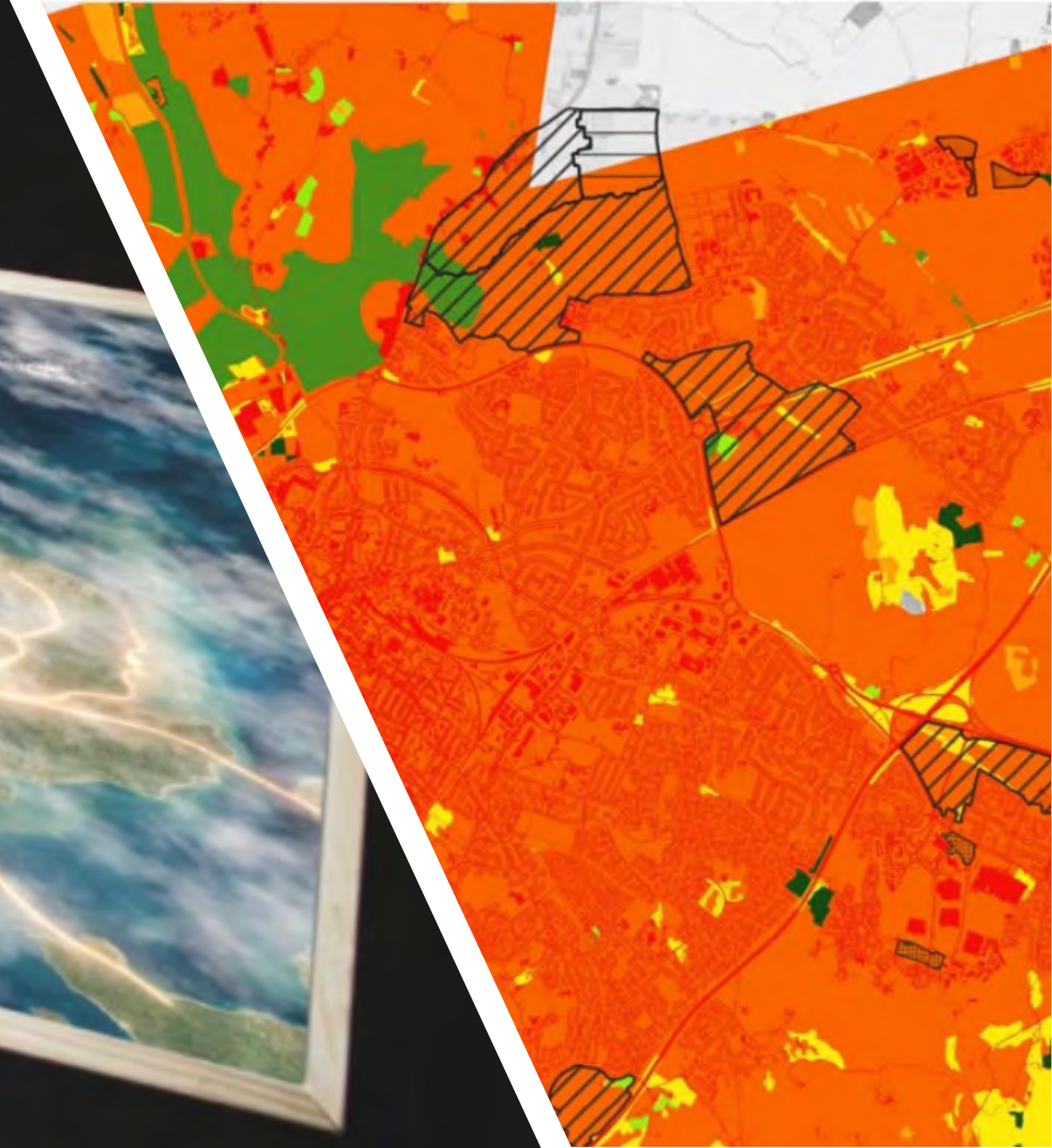
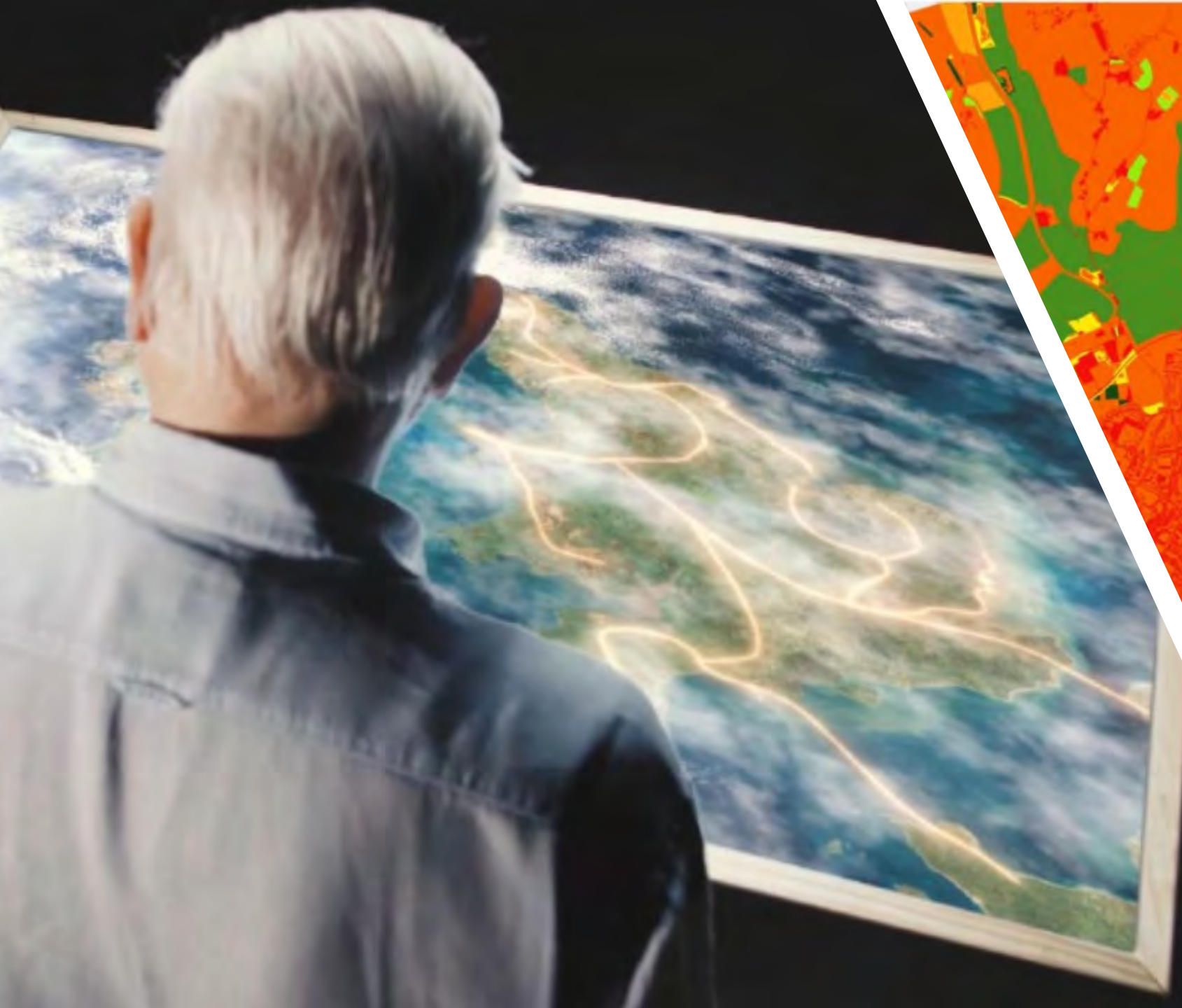
restore nature. These are our thoughts, but we want to know what you think and what you can do to support nature's recovery.

Nature can recover if we choose to help it and Gloucestershire's wildlife needs you to act now. We ask everyone reading this manifesto to do four things:

1. Sign our petition to local MPs calling for a strong Environment Act.
2. Tell us your biggest concerns for wildlife and the natural environment and your ideas for solving them. [@gloswildlife](https://www.instagram.com/gloswildlife) on social media or info@gloucestershirewildlifetrust.co.uk
3. Make your promise to help deliver the seven changes for a wilder Gloucestershire.
4. Share this Manifesto with your family and friends [@gloswildlife](https://www.instagram.com/gloswildlife) on social media or info@gloucestershirewildlifetrust.co.uk

■ Acid Grassland
■ Woodland/Lowland Heath Mosaic





Wilder FUTURE



The unnoticed apocalypse

23



BEE AND FLOWER-VISITING
WASP SPECIES HAVE GONE
EXTINCT
IN THE UK SINCE 1950

APPROXIMATELY

3/4 OF THE CROP
TYPES GROWN
BY HUMANS
REQUIRE
POLLINATION
BY INSECTS

NUMBER OF PESTICIDE
APPLICATIONS HAS
APPROXIMATELY
DOUBLED OVER **25**
THE LAST YEARS

UK "WIDER COUNTRYSIDE" BUTTERFLIES

DECLINED 46%
AND HABITAT
SPECIALISTS BY **77%**
between 1976 and 2017



UK POPULATIONS OF THE
SPOTTED FLYCATCHER
FELL BY **93%**
BETWEEN 1967 AND 2016

Other once-common insectivorous birds
have suffered similarly, including

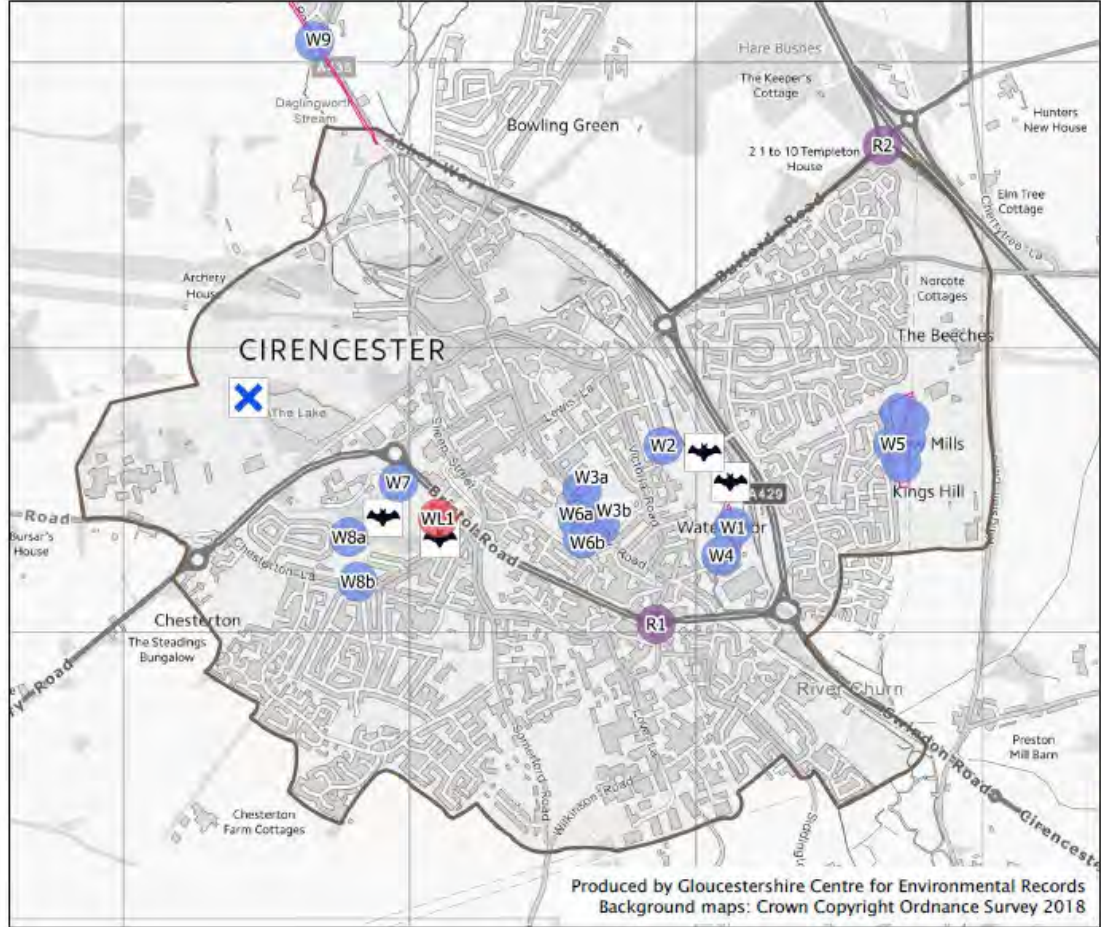
THE GREY PARTRIDGE **-92%**
NIGHTINGALE **-93%**
AND SUCKER **-77%**

A SURVEY OF HONEY SAMPLES
FROM AROUND THE WORLD
REVEALS THAT **75%**

75% CONTAIN
NEONICOTINOID INSECTICIDES

THE RED-BACKED SHRIKE,
A SPECIALIST PREDATOR OF
LARGE INSECTS, WENT
EXTINCT





CIRENCESTER Wild Town

- Wild Town enhancements
- Wetland management
 - Wildflower planting
 - Roundabout planting
 - Bat housing
 - X Weir
 - Intervention areas
 - Wild Town boundary









Building with Nature

Major strategic allocations with design awards: Chesterton and Elms Park

One awarded scheme (Gloucester Services)

Included in one GI strategy (CDC)

TBC team trained as assessors – with ambition to use Building with Nature at the Tewkesbury Garden Town

Ambition to use tool at Sharpness

Working on retrofit with social housing providers in Matson and Podsmead





Bigger, better and more connected

