

Severn Treescapes Project

Wild Walks Worcester



Explore and immerse yourself in nature

Welcome to the Severn Treescapes map for Worcester

This map highlights woodland and other green spaces that are brilliant for trees and other wildlife, within easy reach of Worcester, Droitwich Spa or Pershore. They can be visited by bus, train, foot, bike and/or car.

Postcodes and/or **what3words** are used within the sentences. Some sites have easy and harder routes available.



Easy ★: Well marked routes with flat, even, often hard surfaces, few steps or steep sections

Medium ★★: Some steeper or possibly muddy routes, with rougher surfaces

Hard ★★★: Less well defined and maintained routes with some steep unstable sections



Photo: Bluebells. © Laura Mort

worcswildlifetrust.co.uk

KEY:



By Car



By Bus



By Train



By Foot



By Bike



Kissing Gate



Dogs On Lead



No Dogs



Cafe



Toilets

Wildgoose Nature Reserve



This lake, reedbed and willow woodland used to be a sand and gravel quarry. It now provides training opportunities for people wanting to work on the land.

Access

Visit during opening hours only. Follow signs to Bonnie's Tea Rooms, **WR2 6LS**, [belong.prop.games](#)

Circular walk round lake, steep and muddy in places.

Highlights

- Herons, moorhens and grebes live among the reeds.
- Insects and mammals are encouraged through nature-friendly planting and maintenance practices.

Droitwich Community Woods



Nature trails along the River Salwarpe through woodland, grassland and saltmarsh.

Access

Park in car park on Ombersley Way, **WR9 0RW**, [width.imparting.consonant](#)

Access to three short well signed trails. Some are tarmacked and flat; others can be muddy.

Highlights

- Salt extraction took place here in Roman times.
- Dittander, a seaside plant, grows here alongside the river.
- Look out for skylarks in the summer.

Warndon Woodlands Local Nature Reserve



Ancient semi-natural woodland, with recent secondary woodland and hedgerows.

Access

Footpath between houses on Grosmont Avenue, [melt.drape.much](#) and Stafford Avenue.

Some tarmacked paths, some muddy and steep. Some paths lead across Parsonage Way, a busy main road. Three short trails available online.

Highlights

- Traditional techniques such as coppicing, hedge laying, thinning and mowing benefit wildlife.

Perry Wood Local Nature Reserve



Ancient semi-natural woodland, unimproved grassland, scrub and bramble. Became a nature reserve in 1987.

Access

Several pedestrian entrances (usually through alleyways between houses) including Liverpool Road, Medway Road and Canterbury Road.

Tarmacked path along edge of wood; other paths can be steep. Forestry England trail available (1.5km).

Highlights

- Some trees left to become veteran trees to provide a habitat for insects and nesting birds.



Illustrations: Speckled wood butterfly (top left), Wren (bottom right). © Abi Stubbs



Photo: Meadow. © Wendy Carter

worcswildlifetrust.co.uk

Chapter Meadows

5



A central Worcester nature reserve privately owned and publicly accessible.

Access

Park on side of Bromwich Road, [boil.oldest.badge](#)

Signage indicates access from the tarmacked shared use Kingfisher Path, which runs alongside allotments and continues along the river to Worcester.

Highlights

- Originally used as hay meadows in Roman and Norman times. Hay is still traditionally cut in summer to benefit wildlife.
- Wildflower areas, ponds and hedge planting provide a variety of diverse habitats.

Cherry Orchard Woods

6



Managed conservation site adjacent to river, including grassland and scrub.

Access

Cycle over Diglis bridge. Limited parking on residential roads access through gate, [empire.vibes.neon](#)

Grass and earth paths can be muddy.

Highlights

- Formerly landfill site, now colonised by nature.
- Look out for slow worms and green woodpeckers amongst the fruit trees.

Worcester Woods Country Park

7



Encompasses ancient Nunnery wood, previously medieval farmland, and the wide open Hornhill Meadows.

Access

Buses arrive at the car park (open daily) off Wildwood Drive, [WR5 2LG](#), [movie.songs.recent](#)

Short self-guided trails, orienteering trail and play equipment available.

Highlights

- Veteran oak tree that is at least 550 years old.
- Bluebell woodland is home to woodpeckers, nuthatches and great crested newts.

Stoulton Millenium Wood

8



Open woodland with several circular walks available online taking in local countryside and villages.

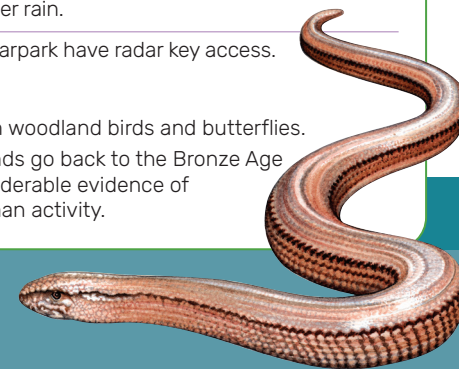
Access

Stoulton Woodland car park, [plans.pixel.nutty](#), is well signed. Paths are muddy after rain.

Kissing gates from carpark have radar key access.

Highlights

- Home to common woodland birds and butterflies.
- Archaeological finds go back to the Bronze Age and there is considerable evidence of Iron Age and Roman activity.



KEY:



By Car



By Bus



By Train



By Foot



By Bike



Kissing Gate



Dogs On Lead



No Dogs



Cafe



Toilets



Severn Treescapes is a Worcestershire, Gloucestershire and Herefordshire Wildlife Trusts' partnership project working across the three counties.

This resource has been written by Ed Drewitt, Freelance Naturalist and Learning Consultant, and Louisa Aldridge, Learning Consultant.

Map and graphic design by Clare Challice, Inkwood Design.
Watercolour illustrations by Abi Stubbs.

© Photography Credits:

Wild Goose Nature Reserve (Kingfishers) by Jon Hawkins, Droitwich Community Woods (Wetland woodland) by Paul Lane, Perry Wood (Woodland scene), Chapter Meadows (Purple loosestrife), Cherry Orchard (Beech branch) & Stoulton Millenium Wood (Maple leaves) by Shutterstock, Warndon Woodlands (Tree canopy) by Wendy Carter & Worcester Woods (Tree canopy) supplied by GWT & WWT.

Photo opposite: Queens Wood Arboretum, Hereford (Autumn) by Caitlin Chilman.



Severn Treescapes

Wye to Wyre, connecting nature and people

worcswildlifetrust.co.uk