



Gloucestershire
Wildlife Trust

Impact Report

2024/2025

gloucestershirewildlifetrust.co.uk

Gloucestershire Wildlife Trust Registered Charity Number 232580

Welcome to Gloucestershire Wildlife Trust's Impact Report for 2024/25



I was honoured to be elected to the Board of Trustees at the AGM in November last year and

delighted to step into the role of Chair in April this year, following Dr. David Bullock's completion of his five-year term. I would like to thank David for his tireless commitment to Gloucestershire Wildlife Trust (GWT) over this period.

The past year has been challenging as we strive to deliver the ambitious but important goals set out in our 2030 strategy. The dual crises of biodiversity loss and climate change remain urgent; funding remains uncertain, and the wider cost-of-living pressures continue to affect our communities and operations.

Yet, against this backdrop, I have been deeply impressed by the energy, commitment, and creativity of everyone connected to the Trust.

In the short time I've been involved, it has been a privilege to witness the breadth and ambition of our work. We are making tangible progress towards our 2030 strategy, creating more space for nature, restoring habitats at scale, and connecting landscapes and communities alike.

This year saw the successful completion of the first phase of the Severn Treescapes project, in partnership with Worcestershire and Herefordshire Wildlife Trusts, demonstrating the power of collaboration of landowners and communities across the three counties.

The Eelscapes landscape recovery initiative is gathering pace, laying the groundwork for large-scale wetland creation and restoration with our partners at Wildfowl & Wetlands Trust (WWT).

We completed a feasibility study for the return of wild beavers to Gloucestershire, an important step towards restoring natural processes to our ecosystems for the benefit of nature and of our communities.

In the Slad Valley, the acquisition of the 23-acre Juniper Hill Field, made possible by an inspiring local campaign, was a landmark moment. This was followed by the launch of our Knapp Lane Meadows appeal, central to our plans to manage our sites in the Golden Valley Nature Recovery Zone holistically, providing opportunities to expand our grazing capabilities and increase the area we manage to support wildlife.

Our work to re-connect people with nature, helping them feel a greater sense of belonging in nature and supporting them to take meaningful action for wildlife, has gone from strength to strength.

From Water Guardians, training local volunteers to monitor our rivers and streams, to the Do One Thing initiative empowering communities to act for nature, we are enabling people to be part of the solution. Notably, our involvement in the 'Restore Nature Now' march alongside

other nature and climate organisations ahead of the general election, with over 60,000 voices calling for political action, reminds us that the movement for nature is growing and that Gloucestershire is playing its part.

Meanwhile, stage one of our Waterscapes project has delivered over 10 bespoke nature-based solutions in Gloucester and Cheltenham. Independent analysis has estimated their value at £2.99m over 10 years, rising to £6.79m over 30 years, a powerful reminder that investing in nature delivers long-term value.

We have also focussed internally, strengthening the foundations that support our work. The rollout of the electronic volunteer management system, Team Kinetic, will enable us to better support our growing volunteer network. A new project management framework will ensure we continue to select, develop and deliver high-quality, high-impact projects across the county.

As we look ahead to 2025/26, I want to extend my heartfelt thanks to our staff, volunteers, fellow Trustees, supporters and funders. Your dedication makes everything possible. Together, we are building a wilder, more resilient Gloucestershire.

Professor Kathryn Monk,
Chair of Trustees

'We are making tangible progress towards our 2030 strategy, creating more space for nature, restoring habitats at scale, and connecting landscapes and communities alike.'



Green hairstreak butterfly

A year in review



2024

April

- 1** Staff Anniversary Celebration for two colleagues, each with 30 years' service
- 2** Wild Child festival

May

- 3** Celebrated Biodiversity Week by holding Wildlife Festivals in Cheltenham and Gloucester

June

- 4** Staff, volunteers and members join the Restore Nature Now march in London

July

- Round table meetings with new MPs
- 5** Held 48th annual Schools Quiz

August

- 6** Celebrated Hillfest at Robinswood Hill
- 7** Wildlife Photography Competition

September

- Celebrated the end of Nextdoor Nature with events in Cheltenham and Gloucester
- 8** Frances Halstead received a BBC Radio Glos Award

October

- The People's Nature Reserve reaches 300 sign ups
- 9** Families joined us for AutumnFest at Robinswood Hill

November

- Aquisition of Juniper Hill Fields
- Launch of Team Kinetic to help us develop and manage volunteer activity
- New Trustees stand for election at AGM
- 10** We launched our Beaver Feasibility survey

December

- Celebration event for the end of Waterscapes part one
- Launch of Nature Nurtures appeal
- 11** New sculpture and bench installed at Crickley Hill to celebrate the Recovering Adders on the Cotswold Escarpment project

2025

January

- 12** Pine marten sculpture installed in the Forest of Dean to celebrate completion of the reintroduction project

February

- Legislation changed to allow licensed wild release of beavers

March

- Completion of the Trees Call to Action Fund
- End of Adders Recovery Project
- 12** Launch of Knapp Lane Meadows appeal
- The new "Western Forest" initiative supported by GWT gets £7.5m in Government funding



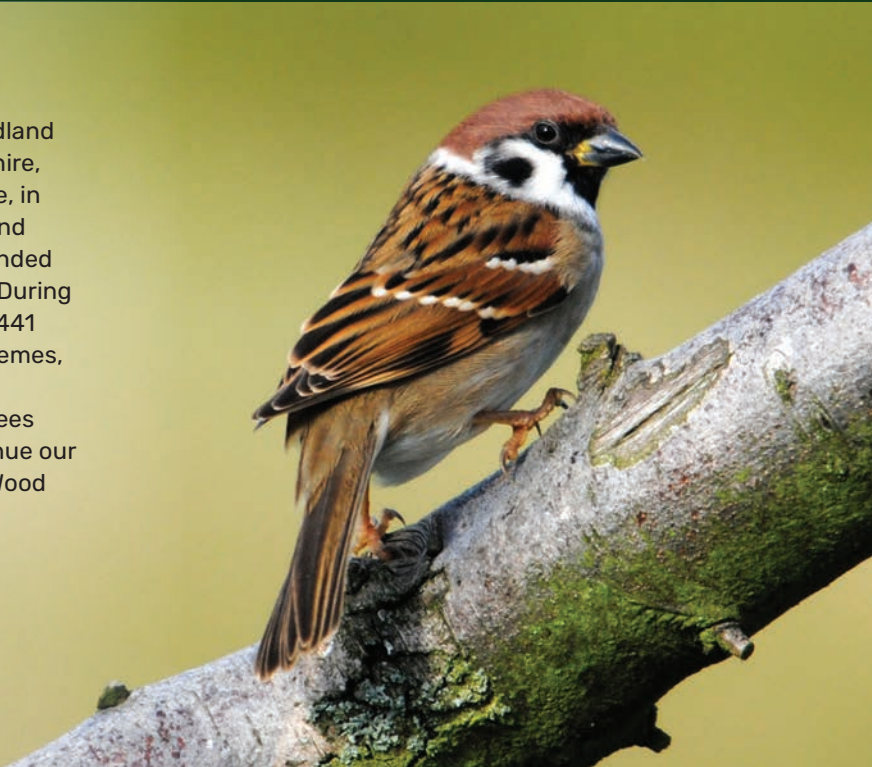
Photos top right: Beaver © David Parkyn | Pine marten © Bill Cuthbert

How we're doing against our plans

Severn Treescapes

Severn Treescapes continues to create a 60-mile corridor of woodland connectivity across Gloucestershire, Herefordshire and Worcestershire, in partnership with Herefordshire and Worcestershire Wildlife Trusts, funded by the Trees Call to Action Fund. During this past year we have pipelined 441 hectares of land into various schemes, liaised with 173 landowners, and engaged 6,100 people to value trees and wooded habitats. We'll continue our Treescapes work with the Dead Wood Society project in 2025/2026 (read more on page 12).

Tree sparrow © Amy Lewis



Beavers

We have created a new beaver feasibility field survey method, to validate and expand these initial findings, and have begun an ecological assessment to determine how the presence of beavers could impact other species in the local area. To share our findings and add to growing reintroduction research, we have engaged widely with experts and other Wildlife Trusts and are exploring the use of new modelling tools to gather further data on flood risk and beaver dispersal patterns.

To create a robust engagement strategy, we are carrying out a stakeholder analysis, and later this year we will lead the formation of a county-wide stakeholder partnership to lay the foundations for future human-beaver coexistence. By this time next year, we'll have published a full feasibility report, including a shortlist of potential release sites, along with recommendations for further work to secure a successful future for this incredible keystone species in Gloucestershire.



Creating bigger, better, more and connected landscapes

GRASwolds

This is our Grassland Recovery at Scale project located in the Cotswolds, where 40 landowners covering more than 3,800ha have agreed to restore and create grassland and scrub habitats. To progress GRASwolds until a new round of Landscape Recovery (LR) opens, we completed a Farming in Protected Landscapes (FiPL) funded project together with Hartpury University where we baselined four farms for natural capital and carbon. The farms were surveyed using the UK habitats system and we calculated the possible number of Biodiversity Net Gain (BNG) units that each farm could generate. A carbon audit allowed us to calculate each farm's total footprint. Soil carbon was measured against habitat and this has resulted in published research papers. The project also identified a problem with undermanagement of existing grasslands, and we have been successful in securing a second FiPL project that will determine how this can be corrected. Completing this will provide experience and data to support a future LR application.



Nature Returns

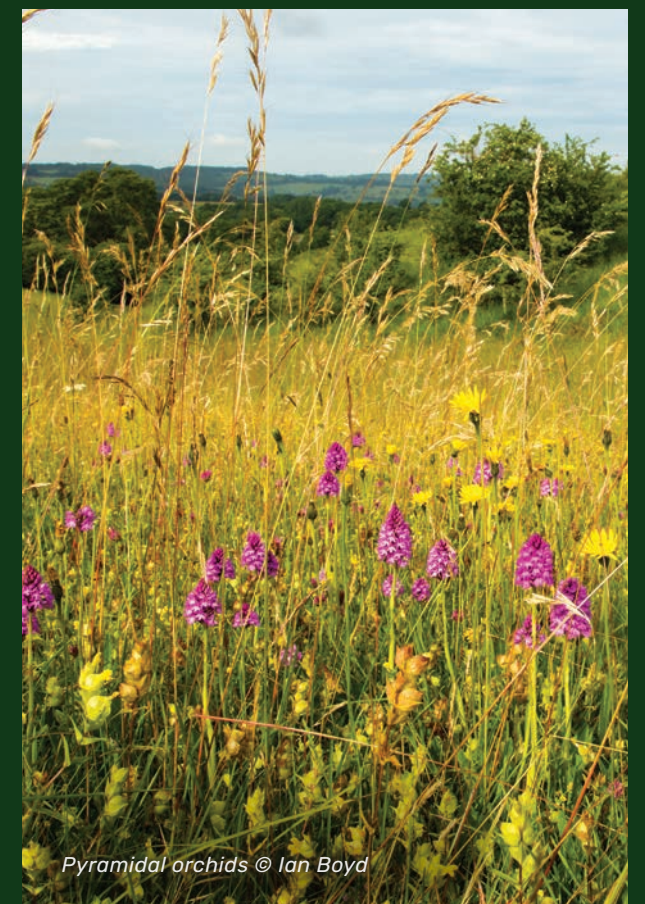
Nature Returns, an extension to our Severn Solutions for Nature's Recovery project in partnership with Hasfield Court Estate, has now come to an end. This was one of six pilot projects taking place across the UK and has evidenced how the restoration of semi-natural habitats can deliver nature-based solutions to combat climate change and tackle the ecological emergency. Working within our Severn Hams Nature Recovery Zone, we have created 48 hectares of new and restored habitats, enhancing biodiversity, carbon storage, and flood resilience. This includes reintroducing lost tree-rich landscapes to create wood pasture, restoring one of the UK's rarest habitats, species rich grassland and safeguarding historic fruit varieties for future generations by creating traditional orchards. We would like to give particular thanks to the Hasfield Estate. We have applied for funding to extend this work further across the Severn Vale landscape.

Eelscapes

Our Landscape Recovery funded partnership project with WWT continues to restore naturally functioning and climate-resilient floodplain wetlands, and the iconic and threatened species which depend upon them, along the Severn Vale corridor. We have engaged 22 landowners across the project area, covering over 1,300ha. A variety of wetland habitats including reedbed, ponds, ditches, scrapes and wet grassland are proposed to help populations of rare species including the European eel and true fox-sedge.



Eel © Jack Perks



Pyramidal orchids © Ian Boyd

...continued:
How we're
doing against
our plans...

People and Nature

Wilder Learning

We increased our learning offer with the project:

Roots for a Wilder Future.

Funded for three years, the project has four main aims:

1. Increase nature connectedness in children in target primary schools.
2. Increase pro-nature and pro-environmental behaviours in children in target primary schools.
3. Improve wellbeing of children through time in nature.
4. Increase teacher confidence in their ability to continue to deliver outdoor learning focused on increasing pro-nature and pro-environmental behaviours in primary aged children.

Youth Rangers

We started our successful Youth Rangers programme, a volunteering opportunity, open to young people aged 13-17 which can be used to contribute toward their Duke of Edinburgh Award volunteering. Participants in this programme get practical experience whilst learning about wildlife and wildlife and conservation.



Do One Thing

Our highly successful project, Do One Thing, works with diverse groups to support people to take their first actions for the environment. Through workshops, events and digital content the project has exceeded its target to reach 5,000 people after year one. So far, 5,059 people have "Done One Thing" and a further 1,071 people have engaged with the project.

Continuation of Nature Nurtures

Through a combination of our recent appeal and some generous grants, we are pleased to have secured funds for a further three years of our successful Nature Nurtures programme. A trained Nature and Wellbeing Officer will be recruited to work with groups of children and young people to promote positive mental health through immersive experiences in the natural world.

Empowering neighbourhood nature and planning

We have partnered with Wates Family Enterprise Trust and Royal Society of Wildlife Trusts (RSWT) to pilot a scheme that will use the community-organising approach pioneered in our successful project to work in communities to help them influence planning systems that will impact their neighbourhoods. Desk research has already begun to identify where we will work, and we hope to recruit an officer into the role later in the year.

Gloucester and Cheltenham Waterscapes

The first phase of our partnership with RSA, Gloucester and Cheltenham Waterscapes, ended in March. Through targeted interventions such as rain gardens, green roofs, wetland creation, and sustainable urban drainage systems (SuDS), the project has mitigated surface water run-off and contributed to climate adaptation efforts in urban areas. Key achievements included the installation of four showcase rain gardens, multiple driveway de-paves and green infrastructure improvements across priority sites.

The project engaged over 3,600 people, including 1,189 school children, through events, talks, and hands-on volunteering.

The project activity has led to a reduction in local flood risk for 50 homes, with an estimated long-term economic benefit of £2.99m - £9.1m over a 10 to 30 year period.

...continued:

**How we're
doing against
our plans...**

Fit for the Future

Wild Trainees

Generous funding from Ecctis, together with individual donors, has allowed us to recruit a cohort of trainees across various teams, including Engagement and Learning, Land Management and Evidence Teams. Trainees aged 18-25 spend up to a year honing their skills for a career in conservation receiving mentoring from senior colleagues, practical training and a chance to try out a wide range of roles in the sector.



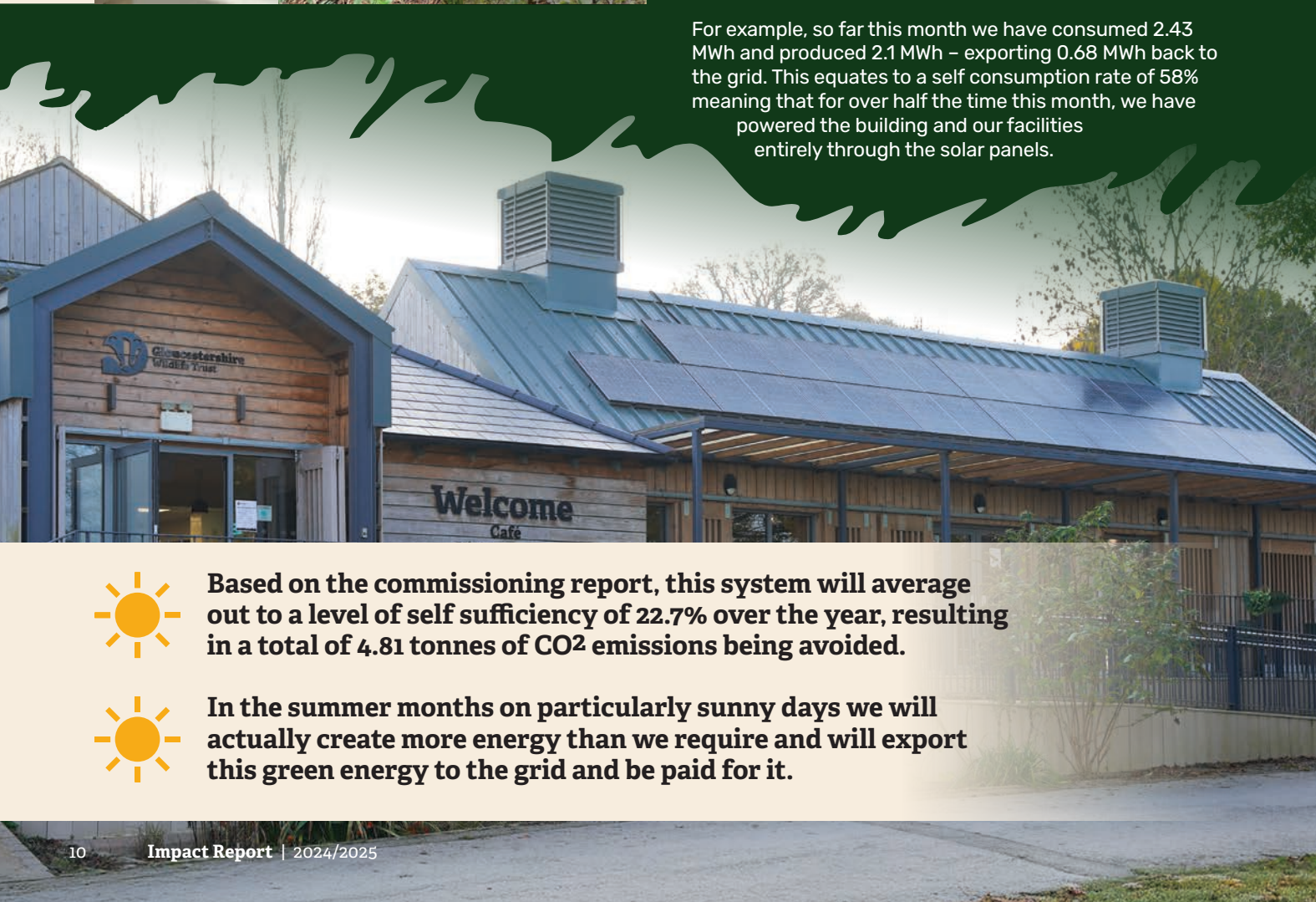
Photos: © Ellen Winter



Solar panels

Our new 27.28 kWp grid-connected PV system (made up of 62 solar modules) has been up and running for over six months now and we have seen a notable difference in our energy usage as the days have become longer.

For example, so far this month we have consumed 2.43 MWh and produced 2.1 MWh – exporting 0.68 MWh back to the grid. This equates to a self consumption rate of 58% meaning that for over half the time this month, we have powered the building and our facilities entirely through the solar panels.



Based on the commissioning report, this system will average out to a level of self sufficiency of 22.7% over the year, resulting in a total of 4.81 tonnes of CO₂ emissions being avoided.



In the summer months on particularly sunny days we will actually create more energy than we require and will export this green energy to the grid and be paid for it.

Campaigning and Advocacy

We entered the campaign spirit by...



Redshank © Peter Cairns 2020VISION

- Joining the national Restore Nature Now march in London, speaking up for nature and wildlife.
- Locally, we asked Gloucestershire residents to get involved with the Strategic Local Plan, making sure their voices were heard.
- Pre-election 2024 – we met with several candidates throughout the county, making connections with them and stressing some of the key issues for Gloucestershire and its natural environment.
- Post-election – we held a round table event with the new MP for Stroud (Simon Opher) and Gloucester (Alex McIntyre). Plus, we met with Ros Savage (South Cotswolds) and pioneer of the private members Climate and Nature bill with Wilts Wildlife Trust.
- We held active briefings with MPs and parish councils on the environmental impact of the EDF nuclear power station Hinkley Point C – working in partnership with other Wildlife Trusts and environmental NGOs to influence the plans.



Our future plans: 2025 and beyond

Creating bigger, better and more connected landscapes

Treescapes

Delivery of Severn Treescapes in 2025/26 will focus on delivery of our Dead Wood Society project, funded by National Lottery Heritage Fund, and the continuation of our partnership work with Worcestershire and Herefordshire Wildlife Trusts. The Dead Wood Society project focuses on traditional orchards, veteran trees and wood pasture and the important saproxylic species, birds and bats that dead wood habitats support.

We will also continue, with funding from the Environment Agency and corporate supporters, to work with landowners across the Treescapes area to increase wooded habitat connectivity within productive landscapes, working towards our ambition to connect the Lower Wye and Forest of Dean to the Wyre Forest.

Beavers

In 2025 we will produce a final report for the Beaver Feasibility Project which will show results from the last two years of assessment into the feasibility of reintroducing beaver populations to Gloucestershire. If the results show it is feasible to reintroduce beavers into the county, we will be moving the project into the next phase and will be seeking funding for a large-scale landscape recovery project using beavers to engineer and restore wetland habitats. Beavers are ecological engineers and the wetlands created will enhance water quality, increase water retention to reduce flooding and improve biodiversity for a whole host of species.

Eelscapes

The development phase of the Eelscapes Landscape Recovery project will finish in June 2025, with the submission of a detailed proposal to the Department of the Environment, Food and Rural Affairs (Defra).

We will then enter a period of negotiation and assurance that will hopefully result in us starting the implementation phase in 2026. This is when we can start delivering landscape scale wetland creation and restoration along the Severn Vale corridor.

Siccaridge, Sapperton and Beyond © Nick Turner

People and Nature



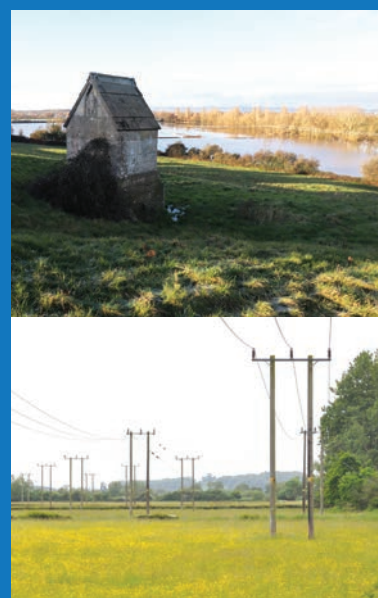
Review of our current and potential Gateway Sites

We have carried out a review of the opportunities for Crickley Hill and Barrow Wake and will be working with our partners in the National Trust to help plan out the potential improvements that could be made to the nature reserves.

The visitor centre facilities at Crickley Hill are reaching the end of life so it is important that we look to invest in the site to make sure it is working as well as it can. The key focus for this will be how we best protect the scheduled ancient monument and Site of Special Scientific Interest, whilst also building on the location as a place to help people connect with wildlife and build a strong sense of belonging in nature.

Despite being a popular location for local walkers and visitors, Greystones Farm has struggled to reach the levels of footfall that are needed to make it successful as a Gateway Site. What has also become clear is that to deliver benefit for wildlife, we need a more focused approach to grazing than can be achieved through the current approach. In 2025/26, we will be changing the way the reserve is managed as part of an ambitious plan to more than double the size of a rare and precious local grassland habitat, whilst still managing a productive farmed landscape.

Over the next 12 months, we will be working with members of the local community keen to be involved in the work, to ensure that the story of the people who lived on the site for thousands of years remains central to the site, and that the community can support nature's recovery there.



Gloucester Nature Park

We're leading the development of Gloucester Nature Park, a long-term vision to re-connect the city with its river - improving habitats in the area whilst improving access for the local community. We commissioned a report which looked at the current infrastructure and community views on the areas around Alney Island, Hempsted and Netheridge, which we are using to inform plans going forward. We will be delivering different GWT projects in the area over the next 12 months and will continue to play the leading role in supporting the delivery of this Local Plan project.



Waterscapes

Following a successful first phase in Gloucester and Cheltenham the project will move into Tewkesbury and Stroud for two years. We will continue to build resilient communities by showcasing nature-based solutions to climate change in urban areas. This will include removing hard surface and slowing the flow of rainwater, reducing flood risk and boosting biodiversity for nature and people to enjoy. Thanks to continued support from Royal Sun Alliance (RSA) Insurance, an Intact company.

*Photos: Feature image: Plock Court
Inset left to right: Greystones Farm © Nathan Millar |
Our Lady's Well | Gloucester Nature Park*

Fit for the Future

Local Nature Recovery Strategy (LNRS)

The drafting of the Gloucestershire Local Nature Recovery Strategy (LNRS) has been led by the Gloucestershire Local Nature Partnership with technical support from GWT and Gloucestershire's Centre for Ecological Environmental Records (GCER). We have provided technical advice on the biodiversity priorities in Gloucestershire and the LNRS mapping has been built around the Nature Recovery Mapping developed by GWT in 2019. GCER have led the species working group and the work of selecting the species list was hailed an exemplar by DEFRA and Natural England. GCER have also built the incredible interactive LNRS map website.

The LNRS has been through local authority pre-consultation and the Natural England panel, and in the coming months will move through public consultation into adoption and final publication.

Pasqueflower © Zsuzanna Bird

Growing our foundations

A key focus for the year ahead will be some behind-the-scenes activity to upgrade the systems and processes we rely on for all of our work. In order that we focus as much of our time and resource as possible on securing nature's recovery, it is important to make sure that we run as efficiently and smoothly as possible. With that in mind, we will be reviewing and updating a range of policies and systems, including those in Finance and Human Resources, making sure that we make the most of every penny we raise and support our colleagues in the delivery of our goals. With the increasing cost pressures we face, we will also be seeking to improve the contribution made by our commercial activity, strengthening and diversifying the income we receive whilst also supporting the delivery of our strategy.



Swift

Local Wildlife Sites restart

Local Wildlife Sites (LWS), formerly known as Key Wildlife Sites, is set for a restart, thanks to funding secured from Gloucestershire County Council.

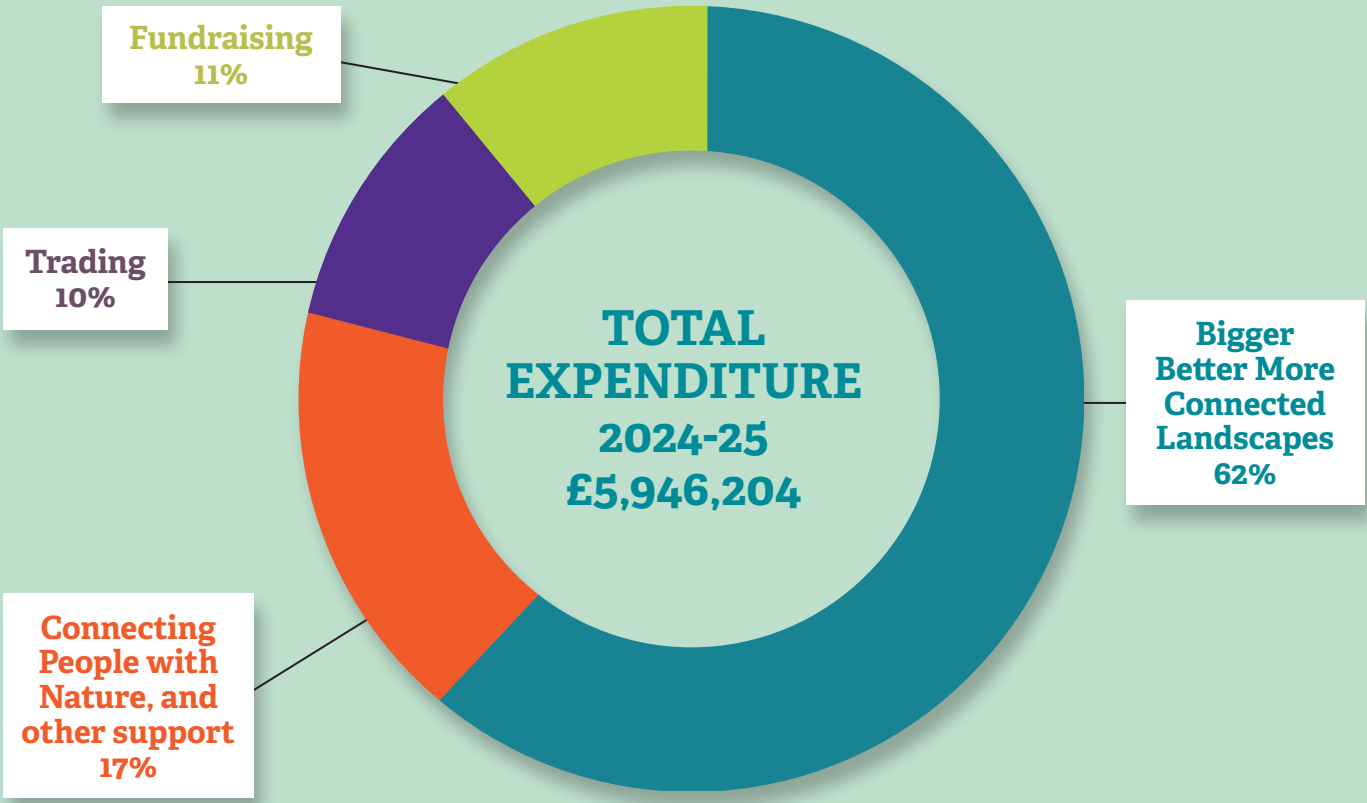
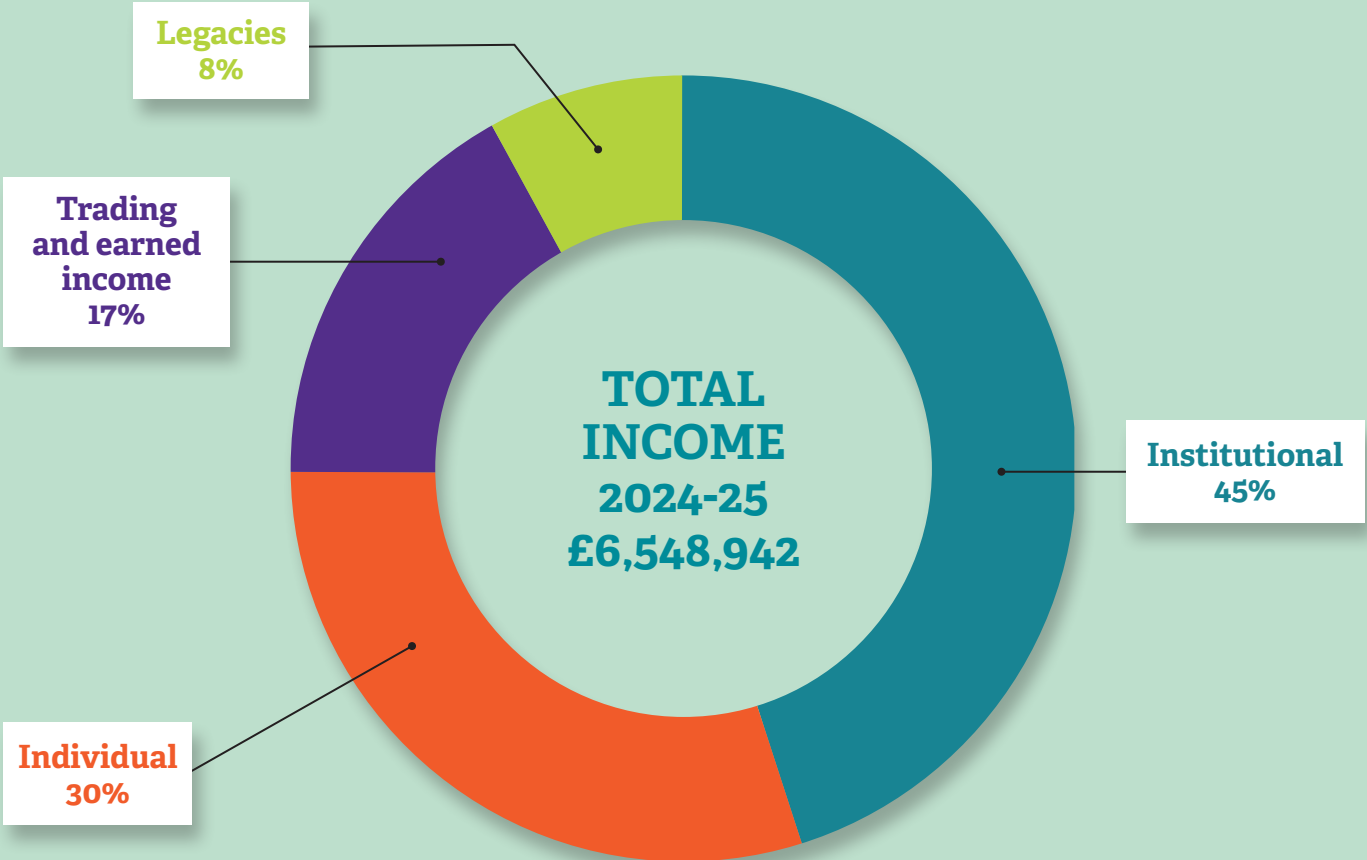
The LWS register plays an important part in the planning system, highlighting and providing a level of protection for existing sites of biodiversity value that do not have national designations. The inclusion, by DEFRA, of LWS as part of the baseline 'Areas of Particular Importance for Biodiversity' within Local Nature Recovery Strategies, provides an opportunity to highlight their importance to the local authorities.

Due to lack of funding, Gloucestershire has not had a Local Wildlife Sites Officer, which has meant no new local wildlife sites have been identified, condition assessments have only been carried out where they have specifically funded and no advice has been given to landowners. But starting from May 2025 a new Local Wildlife Sites Officer will be recruited for an initial two year basis with the aim of reestablishing and reinvigorating the LWS system in Gloucestershire.



Water vole

Financial statement



Thank you

A huge thank you to our members, Wildlife Guardians, donors and everyone who has chosen to leave us a gift in their will this year. We could not do our vital work without you.

Charitable Trusts

- Anonymous Trust
- Britton Charitable Trust
- Cadbury Foundation
- Causeway Trust
- Corn Mill Trust
- Enovert Community Trust
- Gordon Pack Trust
- Martin Smith Foundation
- National Philanthropic Trust UK
- Saintbury Trust
- The Alexander Moseley Charitable Trust
- The Frith Trust
- The Gordon Gray Trust
- The James Tysoe Trust
- The Stuart and Susan Lever Charitable Trust
- The TK Maxx and HomeSense Foundation
- The Yarrow Trust

Corporate

- Beard Construction
- Spirax Sarco Group
- Centurion Management
- Connected Kerb
- Cotswold Hideaways
- ECCTIS Ltd
- Everhot
- Institute of Licensing Events Ltd
- Jackman Woods
- John Lewis and Partners - Community Matters
- Kendrick Homes
- Leckhampton Builders
- Solo Service Group
- Sudeley Castle
- The PIG - in the Cotswolds (Home Grown Hotels Ltd)
- The Tricklement Co Ltd
- Westerleigh Group Recycling (Forest of Dean Crematorium)
- Willans LLP
- Woolf Properties

Individual

- Anonymous donation to the Education Bursary
- Anonymous donation to the Wild Trainee programme
- Anonymous donation to the Learning Programme
- Anonymous donation to the acquisition of Knapp Lane Meadows
- Anonymous donations to Beaver 'Operation Give a Dam' project
- Anonymous donation to Youth Rangers

Partnerships

- Hasfield Estate
- Herefordshire Wildlife Trust
- Ourboretum
- RSA an Intact Company
- Severn Rivers Trust
- Worcestershire Wildlife Trust
- WWT

Institutional

- British Small Animal Veterinary Association
- Cheltenham Motor Club
- Coalway Junior School
- Cotswolds National Landscape (AONB)
- Ecological Restoration Fund
- Enovert
- Environment Agency
- Ernest Cook Trust
- Evolution Education Trust
- Forestry Commission
- Gloucester City Council
- Gloucestershire County Council
- Gloucestershire Gateway Trust
- Gloucestershire Local Nature Partnership
- Gloucestershire Naturalists' Society
- Grundon Waste Management
- Herefordshire County Council
- Leckhampton/Warden Hill Parish Council
- Natural England
- NHS Gloucestershire ICB
- Project Wilding
- Severn Trent Water
- Sheffield Wildlife Trust
- Stroud High School
- The National Lottery Community Fund
- The National Lottery Reaching Communities Fund
- The National Lottery Heritage Fund
- The National Lottery Partnership Grants
- Wessex Water Services Ltd
- Woodland Trust
- Wye Valley AONB

Additional Thanks

- Cheltenham Rotary Club
- Folk Horror Revival
- Gloucester Strings Ukulele Club
- Nailsworth Quakers
- North Cotswolds Rotary Club
- St Pauls Community Summer Fair



Gloucestershire Wildlife Trust

Email : info@gloucestershirowildlifetrust.co.uk

Telephone : 01452 383333

Address : Conservation Centre,
Robinswood Hill Country Park,
Reservoir Road,
Gloucester.
GL4 6SX

Website : gloucestershirowildlifetrust.co.uk

Registered charity number : 232580

Keep in touch...

Follow us on social media to stay up to date with the latest GWT news :

facebook.com/gloswildlife

X.com/gloswildlife

instagram.com/gloswildlife

[youtube/gloswildlifetrust](https://youtube.com/gloswildlifetrust)



or subscribe to our fortnightly e-newsletter at :
gloucestershirowildlifetrust.co.uk/enews